



PK  
Yonge

# Blue Wave

Secondary Family Welcome

at PK...



Everyone can be a **LEADER**

Everyone has **GENIUS**

**CHANGE** starts with me

Students are **EMPOWERED** to lead their own learning

Educators and families **PARTNER** to develop the whole person

# Blue Wave

Secondary Family Welcome

PK by the numbers



**91** years of  
excellence

**1,420**

PreKindergarten to  
12<sup>th</sup> Grade Students

**30** communities  
represented



school  
since  
2002

2025 graduates  
Florida Bright Futures

**59%**

faculty **91**

public high school in  
north central Florida

**#1**

# Blue Wave

## Secondary Family Welcome

# 6th grade orientation



- *Class Schedules, understanding bell schedule & A/B days, room locations*
- *Community Expectations (4Rs, phones, chromebooks, etc.)*
- *Game/icebreaker*
- *Hopes & Dreams*
- *Extracurriculars*

*In the middle of the rotations, we send the kids off on a scavenger hunt (in small groups) around campus to find where their elective classes will be.*

*There is a teacher at each room to sign off that they found it. We also provide a snack when they finish the hunt.*

*\*\*Slushies from Sonic and Cheeleading performance*

# Blue Wave

## Secondary Family Welcome

# 6th grade orientation

## *Parents*

- Learn about the Middle School Program with
  - Dr. Pennypacker Hill, Principal
  - Dr. Sheppard, Assistant Principal
  - Bryce Stevenson, School Counselor



**Begin  
With  
The  
End  
In  
Mind**



## Secondary Family Welcome

The logo for PKY Blue Wave features a stylized blue wave graphic above the text "PKY" in large, bold, red letters with a blue outline. Below "PKY" is the text "BLUE WAVE" in smaller, blue, sans-serif capital letters. The entire logo is set against a white background.



# Blue Wave

## Secondary Family Welcome

# school leadership



**Dr. Carrie Geiger**  
Director



**Dr. Ashley Pennypacker Hill**  
Secondary Principal



**Dr. Tredina Sheppard**  
Assistant Principal  
for Academic  
Achievement



**Bryce Stevenson**  
Middle School  
Counselor



**Carmen Butfiloski**  
High School  
Counselor



**Emily Schweim**  
High School  
Counselor



**Robbie Brunson**  
Secondary  
Behavior Coach



**Kelly Barrett**  
Athletic Director

# Blue Wave

## Middle School Student Government

- Student Government at PKY is expanding into middle school
- Pilot year for implementation
- 6th graders will have opportunity to apply to serve as “representatives” for their advisory classmates
- Responsibilities will include meeting outside of school day, serving alongside elementary and high school student leaders, helping to positively influence school culture
- Applications will be available at Club Showcase during Open House, September 3<sup>rd</sup>.



# Blue Wave

## Secondary Family Welcome

who to contact  
for help



**Dr. Ashley Pennypacker Hill**  
Secondary Principal



**Dr. Tredina Sheppard**  
Assistant Principal  
for Academic Achievement



**Mr. Bryce Stevenson**  
Middle School  
Counselor



**Coach Robbie Brunson**  
Secondary Behavior Coach



**Ms. Angie Flavin**  
6<sup>th</sup> Grade ELA/ Teacher  
Leader



**Mr. Michael Poole**  
6<sup>th</sup> Grade ELA



**Dr. John Bell**  
6<sup>th</sup> Grade Math



**Ms. Dena Perry**  
6<sup>th</sup> Grade Math



**Ms. Christa Blaske**  
6<sup>th</sup> Grade Social Studies



**Ms. Sara Montgomery**  
6<sup>th</sup> Grade Science



**Dr. Carla-Ann Brown**  
Middle School  
Learning Coach

# Blue Wave

## Secondary Family Welcome

#thePKdifference



- small community of support, everyone knows your name
- students from all backgrounds learn from and with each other
- University of Florida's lab school
- Alumni network, people have paved the way and continue to provide support
- Global experiences
- state of the art facilities
- resources that provide a personalized educational plan



# Blue Wave

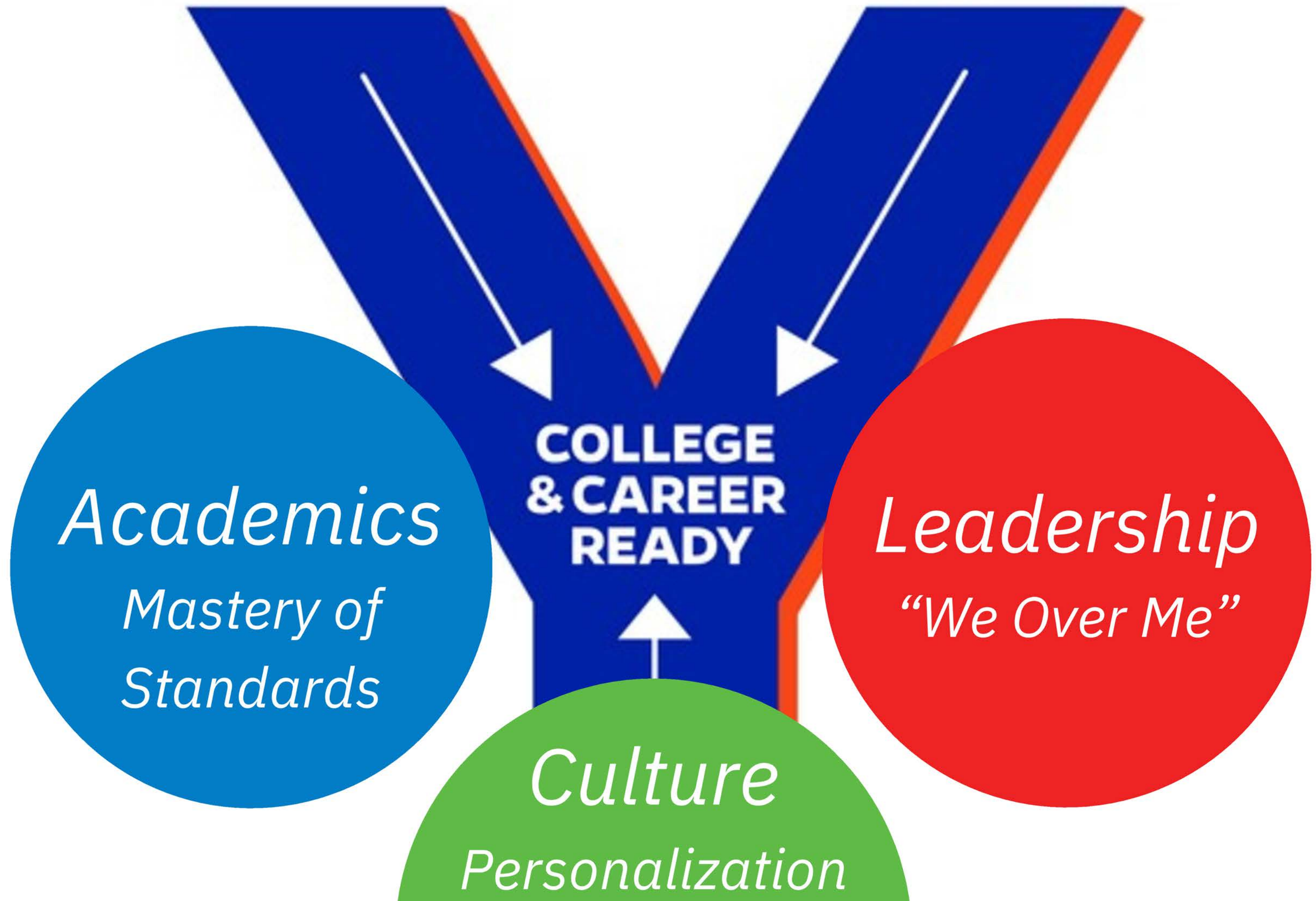
Secondary Family Welcome

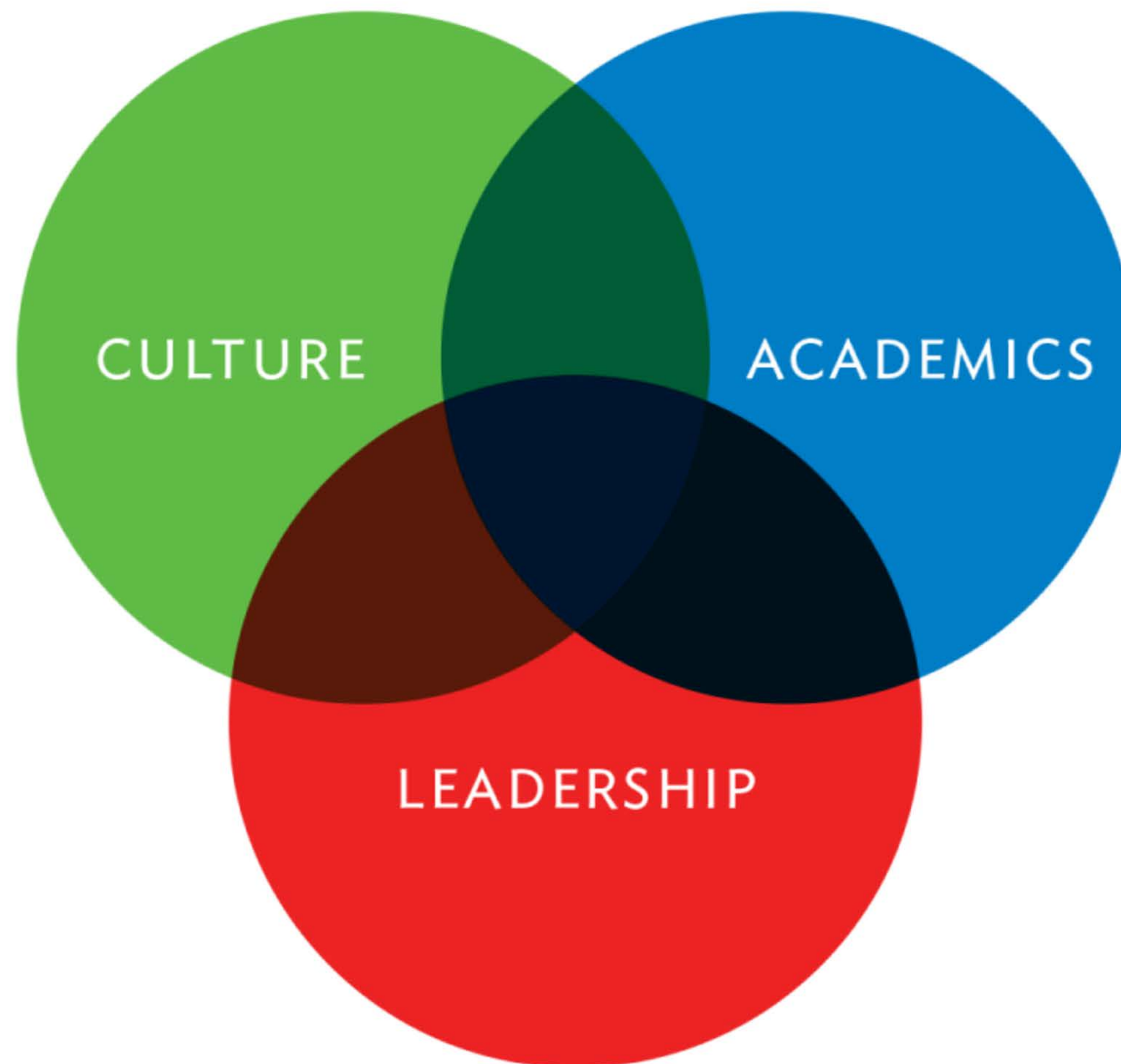
student services



- School Resource Officer
- Behavior Coaches
- School Nurse/Clinic
- School Counselors
- School Psychologist
- Exceptional Student Education
- Occupational Therapist
- Speech & Language Therapist









# Blue Wave

## Secondary Family Welcome

Academics

## Middle School Program

# Blue Wave

Secondary Family Welcome

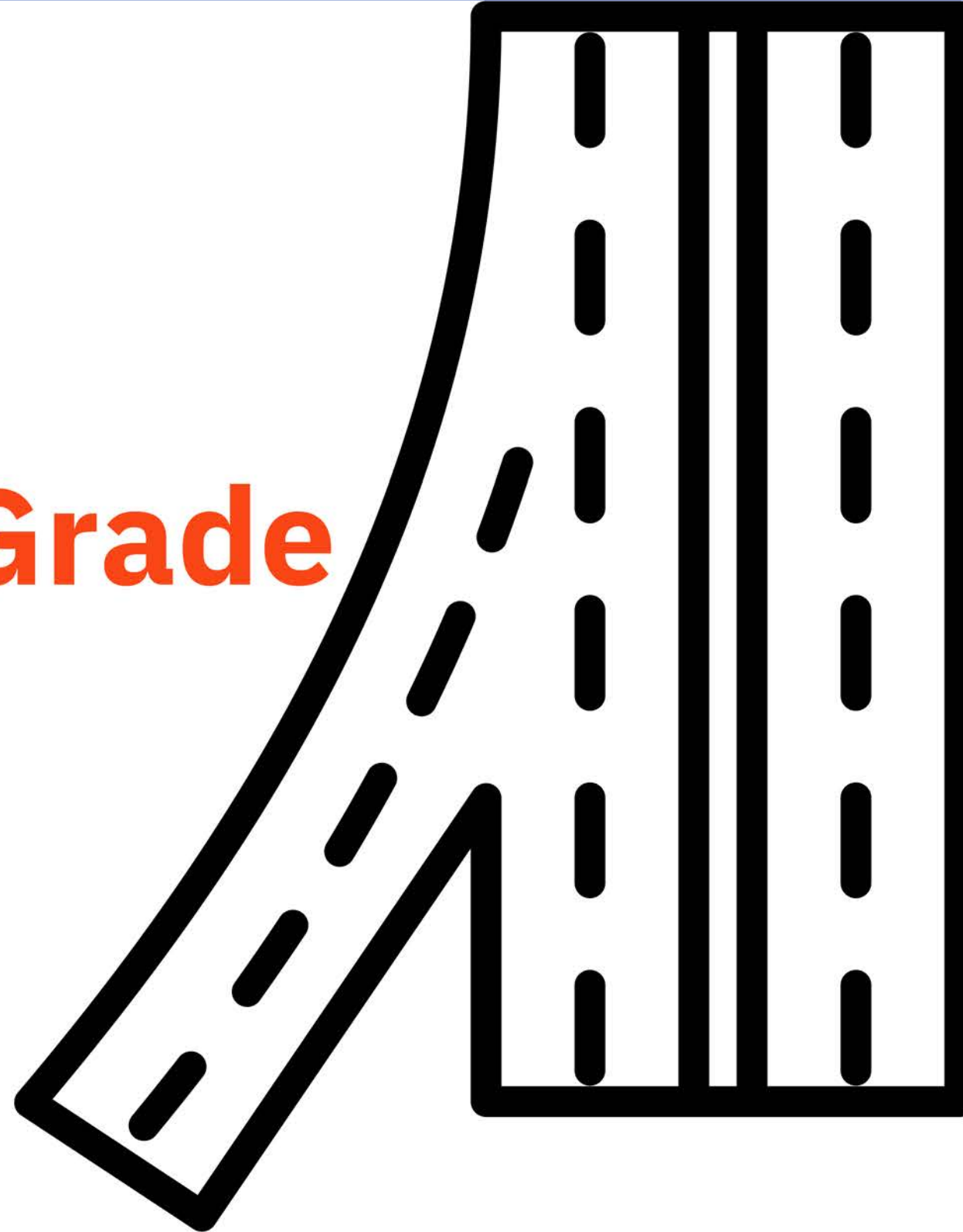
## Middle School Program Emphasis

Academics

**6th-7th Grade**

**8th Grade**

**9th-12th  
Grade**



- changing classes
- cohort building within advisory with representative student population
- lack of school within a school
- safety
  - physical, emotional, academic
  - small school
- chance to experience pathway electives



## **PK Middle School Program Emphasis**

- Transitional period between elementary and high
- Training ground to get them ready for high school while honoring their developmental stage

## **6th-7th Grade Program Emphasis**

- Honing and developing skills

## **8th Grade Program Emphasis**

- Transition to high school

- Honing and developing academic, social, executive functioning skills
- Expanding the daily reading/ELA block through 6<sup>th</sup> grade
- Doubling the instructional time allocated to mathematics for every 6<sup>th</sup> and 7<sup>th</sup> grade student
  - Accelerated to Algebra 1 Honors success in MS (HS credit)
  - small group instruction and differentiated learning in math



# Blue Wave

## Secondary Family Welcome

# 6th Grade Core

Academics

English

Math (accelerated)

Science

US History & Career Planning



- 2-D Studio Art
- Engineering
- Computer Science
- PE
- Band
- Modern Music
- Vocal and Dramatic Arts
- Biomedical Science
- African American History
- Digital Design

### M, T, TH, F Schedule

Period

1

2

3

4

5

Lunch

6

7

8

### WIN Wednesdays

- Advisory - goal setting
- Literacy
- Math
- DREAM time
- Community Building
- Lunch
- DREAM time

A Days - M/Th

B Days - T/F

# Blue Wave

## Secondary Family Welcome

# 6th Sample Schedule

Academics

Period	Courses	
1	Advanced 6 <sup>th</sup> Grade Mathematics	
2	Elective Choice #1- PE	
3	ELA	
4	ELA	
5	Elective Choice #2- Band	
6	Advanced 6 <sup>th</sup> Grade Mathematics Workshop	
7	A Day- Science	B Day- Social Studies
8	A Day- Science	B Day- Social Studies

**8 periods**

### Core Classes

- Math meets every day, 2- 44 minute blocks
- ELA meets every day, 88 minutes.
- Science/SS meets every other day for 88 minutes.

### Electives

- Meet every day, except Weds
- 44-minute blocks

*This is a sample, and the electives may not be exactly in those periods but there will be a morning and afternoon math.*

## Wednesday Advisory

- Community Time
- Mental health education
- College and career conversations
- Leader in Me

## WIN Wednesdays

- Scaffolded development of responsibility
  - teachers support decision making
- Weekly, students collaborate with teachers to make a personalized plan:
  - need more academic help?
  - finish assignments?
  - challenge themselves to grow?



- 8th Grade Algebra 1 Honors
  - Graduation required course
  - Readiness for rigorous STEM coursework in HS
  - Daily math block provides the instructional time needed for success
- Pre-AP World History/ World Geography in 8<sup>th</sup>
  - Option for HS course credit in MS
  - Builds evidence-based reading and writing skills needed in AP
- eLearning Days
  - Learning continues beyond the walls of campus
  - Students engage in academic tasks personalized



## **PK is a tech forward school**

### **Chromebooks**

- Issued when every student form is turned in
- Become familiar with Canvas immediately
- Devices are monitored
- No personal computers on campus

### **Canvas**

- Online learning management system
- All classes use it

### **Google Drive**

1. EVERY student gets one!
2. EVERY teacher uses technology to support student learning.
3. The Chromebook must be brought to school EVERY day, fully charged.
4. Students are responsible for loss or damages.
5. We provide a case.
6. Your child will be assigned a Google Suite account.
7. Students are responsible for their online actions and conduct.
8. Chromebooks must be returned at end of year.
9. Forms must be signed to get a Chromebook.
10. Help is available! [Link to Tech Support](#)

Chromebooks will be issued once a student's forms are complete in Skyward.





- Student Information System
- **[skywardhelp@pky.ufl.edu](mailto:skywardhelp@pky.ufl.edu)**
- Make sure your emails are correct
- First email should be sent automatically. If you don't remember your password, choose "forgot password" to reset.
- Access through Quick Links on website

- Student Information System
  - Address, Phone Number
  - Report Cards
  - Transcripts, Test Scores
  - Behavior Referrals
  - Attendace

\*\*\*PLEASE KEEP SKYWARD UPDATED\*\*\*

\*\*\*FOR HELP, EMAIL: [skywardhelp@pky.ufl.edu](mailto:skywardhelp@pky.ufl.edu) \*\*\*

- Online Learning Management System
- All courses have a Canvas course
- Course Syllabi
- Message the Teacher (or email)
- **Pair your parent account**
  - **If you paired last year, you should already be paired**
- **Grades are most up to date in Canvas**

<https://pkyonge.ufl.edu/canvas/>

# Blue Wave

Secondary Family Welcome

# Communicating with Teachers



**Students:** Email through Canvas

**Parents: Email is typically the best way to communicate with us. Please allow 48 hours for a response.**

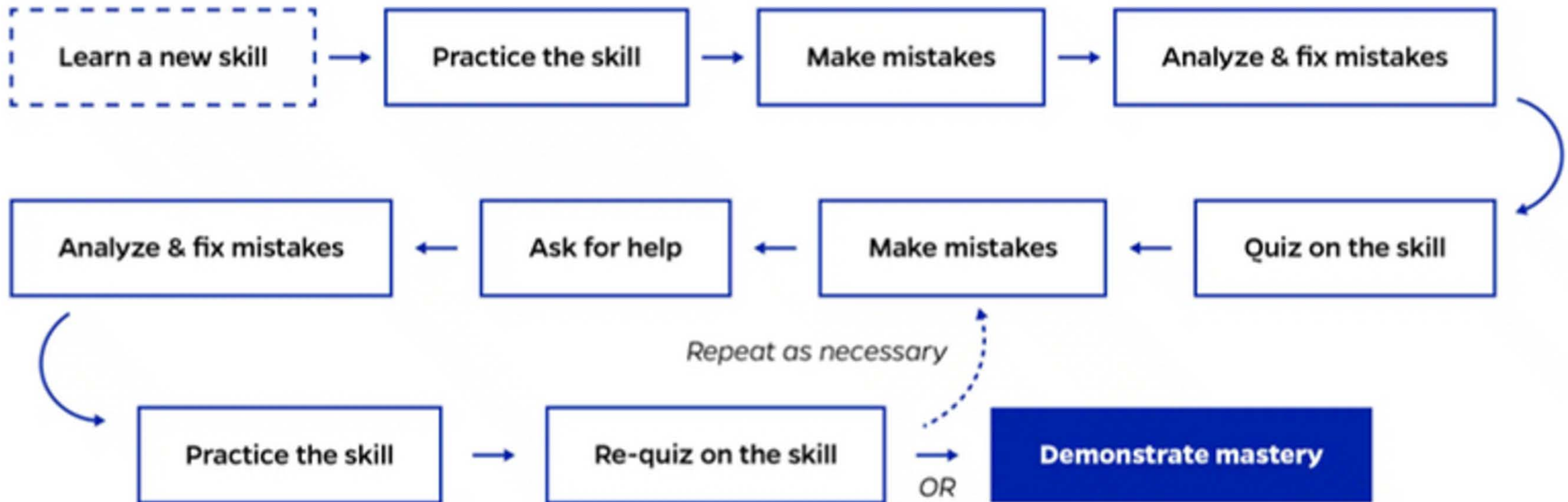
PK main office at 352-392-1554

<https://pkyonge.ufl.edu/directory/>



- Each course has a syllabus
- Course description, goals
- Standards taught, materials used (teacher and student)
- Communication protocols
- Policies





### **Formative Assignments - 20%**

- Daily/weekly coursework that builds

### **Summative Assignments - 75%**

- Tests, Quizzes

### **Habits of Work - 5%**

- Social responsibility
- Focus, engagement, and effort
- Quality of Work
- Timeliness of Work Completion

<https://pkyonge.ufl.edu/grading/>

# Blue Wave

## Secondary Family Welcome

# 4-Point Grading Scale

Academics

Mastery-Language	Range (4-point grade system)	Meets Standard Course Credit Earned
Mastery (A)	3.51 - 4.0	GPA Point 4
Proficient (B)	3.01 - 3.5	GPA Point 3
Approaching (C)	2.51 - 3	GPA Point 2
Beginning (D)	2.01 - 2.5	GPA Point 1
Not Meeting (F)	.01 - 2.0	No Course Credit
No Evidence	0	No Course Credit

<https://pkyonge.ufl.edu/grading/>

- Canvas paired parent account
  - Check for classwork and homework completion
  - Identify areas that more support might be needed
  - Grades - more up-to-date on Canvas than Skyward
- Skyward
  - Transcript
  - Test Data
    - FAST Goal - on or above grade level (3+)
    - PM1, PM2, PM3
- Progress Reports and Report Cards on Skyward

### Student Expectations

- Prioritize school
- Complete classwork and homework
- Focus on learning
- Attend school regularly
- Behave as a good citizen both in and out of school
- Ask for help

### Parent Partnerships

- Help student attend school regularly including reducing tardies and early check-outs
- Be familiar with home resources
- Know your student's data
- Communicate with the teacher

### **Keep a positive attitude**

Show excitement about middle school

### **Time management**

Talk about new class schedule and the importance of being on time

### **Make new friends**

Encourage close relationships with peers who are supportive and loyal



# Blue Wave

Secondary Family Welcome

## Open House

Academics

*Prek-7th Grade Open House*  
*Wednesday, September 3rd*  
*5:30-7:00*  
*More Info Coming Soon*





# Blue Wave

Secondary Family Welcome

Culture

Culture

# Blue Wave

## Being a Part of a PreK-12 School

Culture

### Cross-age Learning Buddies



### Pre-K-12 Faculty



### Student Aides



### Blue Wave Athletics



## ***2024-2025 Middle School Clubs***

- Anime Club
- Blue Wave GSA
- Chess Club
- Creative Computing Club
- Dungeons & Dragons Club
- FCA
- Gaming Club
- Junior Thespians
- Junior Rho Kappa
- Social Studies Honor Society
- National Junior Honor Society
- Odyssey of the Mind

### Middle School Athletics

- Boys & Girls Basketball
- Football
- Volleyball
- Cheer
- Boys & Girls Soccer
- Baseball - P.K. arranges teams through Gatorball

### Junior Varsity and Varsity Athletics

- Cross Country
- Volleyball
- Swimming
- Football
- Girls & Boys Golf
- Girls & Boys Basketball
- Girls & Boys Soccer
- Girls & Boys Tennis
- Softball
- Baseball
- Track & Field
- Football, Basketball, and Competitive Cheer

# Blue Wave

## 24-25 Athletic Highlights

Culture

**4** District  
Champion  
Teams  
Boys Basketball,  
Girls Soccer,  
Boys Tennis, Girl Tennis

Regional Team  
Championship  
**1** Boys  
Tennis

**10**  
College Signees

**2**  
State Medalists  
Katelyn Huber- 3rd  
Jeremiah Sallet- 7th



All-Area Athletes  
**26**  
as of 5/30/25

**136**  
Regional Athletes  
**12**  
Regional Teams

**36**  
State Athletes  
**5** State  
Teams

**18**  
Varsity Teams

- All student-athletes need a P.K. Yonge Athletic Clearance profile.
  - <https://athleticclearance.fhsaahome.org/>
  - If you are prompted to override your student's profile, please contact the Athletic Clearance help email.
- Upload your current physical, parental consent form, and 2025-2026 NFHS certificates. Forms are located on Athletic Clearance.
- This system allows us access to emergency contact information and automates reminders for paperwork.
- Students must have up-to-date physicals and consent forms to participate in any conditioning or practices.

# Blue Wave

# PK Gymnasium

Culture



## *Coming Soon* **P.K. Yonge Gymnasium**

**Final Design Planning**

Summer/Fall 2025

**Breaking Ground**

Spring 2026



Scan the QR Code to help support  
the building of the gymnasium



# Blue Wave

Secondary Family Welcome

Get Involved!

Culture



# Blue Wave

# Collegiate-Like Campus

Culture



# Blue Wave | Cafeteria

Culture

## Outdoor Lunch Cafe



- Part of the Alachua County Schools Food Program
- Must fill out Free/Reduced Application if you are interested
- MySchoolBucks
  - Menus Online

### Lunch Periods

- 6-7 Lunch
- 8-9 Lunch
- 10-12 Lunch

- Breakfast
  - Reduced \$0.30
  - Paid \$1.50
- Lunch
  - Reduced \$0.40
  - Paid \$2.75

# Blue Wave

## International Activities

Culture



**PK Global**  
*Summer 2024*



**Environment & Conservation**  
**Galapagos**



**PK Global**  
*Summer 2024*



**Language Immersion & Culture**  
**Panama**



**PK Global**  
*Summer 2024*



**Robotics & Engineering**  
**Japan**



**Spain**  
**Summer 2025**

# Blue Wave

# BluePrint

Culture



# Blue Wave

# Yearbook & School Newspaper

Culture



- Located in elementary lobby
- [nurse@pky.ufl.edu](mailto:nurse@pky.ufl.edu)

<https://pkyonge.ufl.edu/clinic/>



# Blue Wave

Secondary Family Welcome

Safety

Culture



*Gate Guard*



*University Police Department Resource Officer*

# Blue Wave

Secondary Family Welcome

## Daily Announcements

Culture

- Every day on PA system for secondary
- Also posted to website



<https://pkyonge.ufl.edu/daily-announcements/>

- Secondary Students are expected to abide by the Student Code of Conduct and emulate the 4 Rs: Responsible, Respectful, Resilient, Ready.
- Points are given to students if they receive a behavior referral
  - When a student reaches or exceeds 5 points, they are put on a behavior notice.
  - If a student reaches or exceeds 10 points during a single school year, they will be recommended for dismissal from PKY.
- The Principal/designee is responsible for school discipline and has a reasonable degree of discretion in determining the severity of misconduct and the appropriate consequence. (Section 3, 2025-2026 Code of Conduct)

# Blue Wave

Secondary Family Welcome

The 4 Rs

Culture



# 4R<sub>s</sub>

**RESPONSIBLE**

**RESPECTFUL**

**RESILIENT**

**READY**

- Page 23 of 25-26 Code of Conduct
- All private parts are and remain covered; these include chests, buttocks, and genital areas.
- Clothing that represents hate speech is disruptive to the learning environment and will not be tolerated.

P.K. Yonge



## Wireless Communication Device Policy

*In accordance with Florida HB 1105*

### **K-8th Grade Students**

are **not** allowed to use wireless communication devices **any time from the start of the instructional day to the end of the instructional day.**

### **9th-12th Grade Students**

are **not** allowed to use wireless communication devices **during instructional time.** Devices may not be kept on their person.

**Students in violation of the policy will receive an automatic referral and will have their devices confiscated.**

Confiscated devices will only be released to a parent.

*Wireless communication devices include but are not limited to cell phones and/or auxiliary/ancillary devices such as watches and ear buds.*

# Blue Wave

Secondary Family Welcome

25-26  
Bell Schedule



**Campus is open 7:30-4:00**

## **K-5th Grade School Day**

- 8:00am – 2:45pm – Monday, Tuesday, Thursday, Friday
- 8:00am – 1:40pm – Wednesday

## **6th-7th Grade School Day**

- 8:20am – 3:03pm – Monday, Tuesday, Thursday, Friday
- 8:20am – 1:40pm – Wednesday

## **8th-12th Grade School Day**

- 8:30am – 3:00pm – Monday-Friday

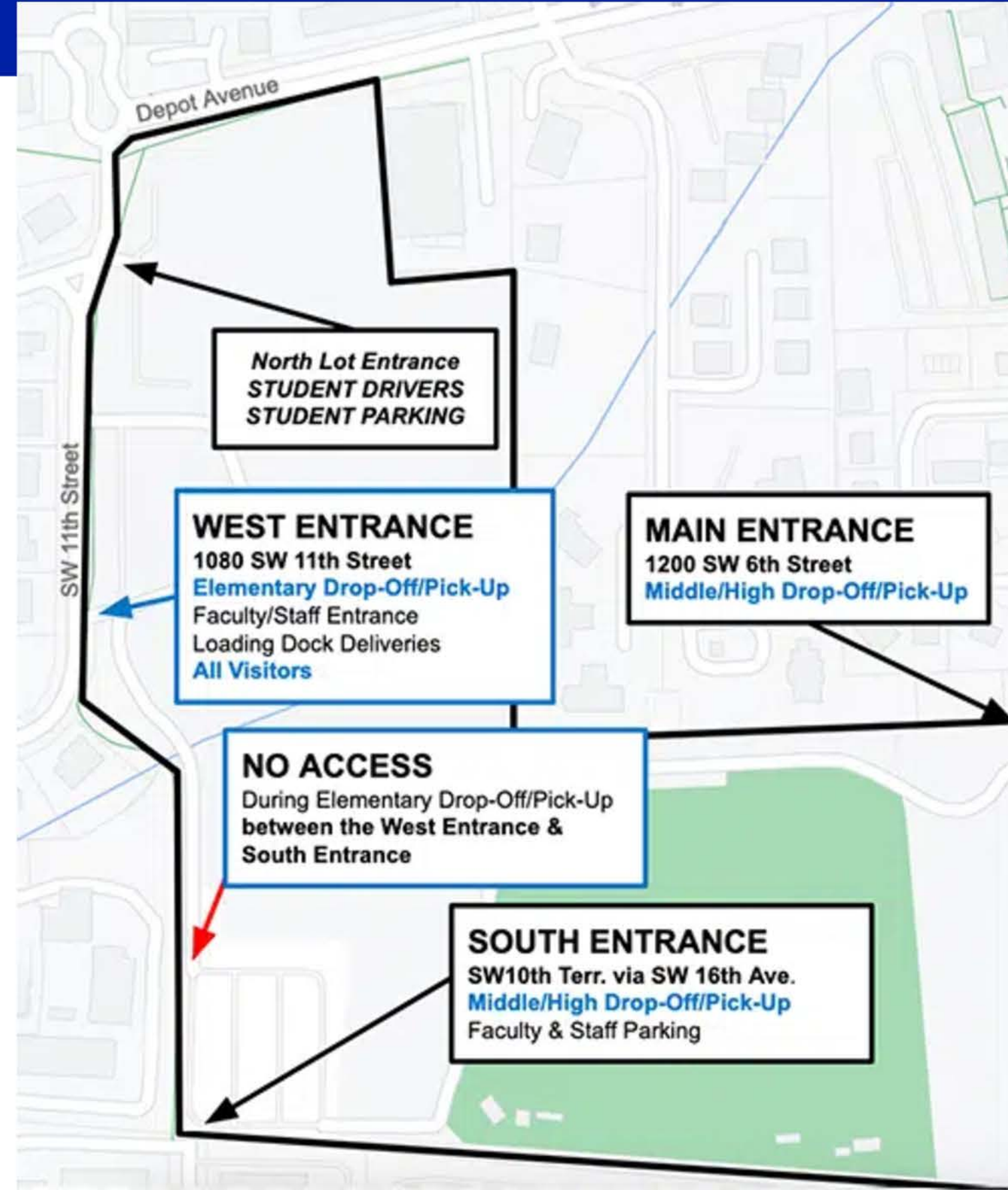
*Must be off campus, at BW Afterschool, or in a supervised activity 15 minutes after dismissal*

<https://pkyongie.ufl.edu/my-pk/2025-2026-bell-schedules/>

# Blue Wave

Secondary Family Welcome

## Traffic & Parking



# Blue Wave

Secondary Family Welcome

Pick Up &  
Drop Off



## Elementary School

- West Entrance - 11<sup>th</sup> Street (top circle)

## Middle/High School

- Main Entrance - 6<sup>th</sup> Street
- South Entrance - Gym/16<sup>th</sup> Ave

## Student Drivers

- 11<sup>th</sup> Street (dirt lot near Depot Ave)

*Student walkers/bikers will not be released outside of the 6th Street gate due to traffic concerns.*

<https://pkyongre.ufl.edu/traffic-parking/>



### Before School

- 7:30-8:20 a.m. Cafeteria

### After School

- 6th and 7<sup>th</sup> grade
  - 3:00-4:00 p.m. Academic Study Hall (M, T, Th, F)

***Must be off campus, at BW Afterschool, or in a supervised activity 15 minutes after dismissal***

Supervised Activities include:

- Scheduled Athletics activities
- Performing Arts rehearsal
- Club Meetings
- Academic Study Hall or Tutoring

Supervised Activities do NOT include:

- being in the gym if not in at an Athletics activity
- waiting to be picked up outside the PAC
- hanging out around campus without a faculty sponsor

<https://pkyonge.ufl.edu/my-pk/2025-2026-bell-schedules/>

# Blue Wave

Secondary Family Welcome

## Blue Wave Afterschool



Space is limited

Accepts up to 8<sup>th</sup> grade

Website: bluewaveafterschool.com

Email: bluewaveafterschool@gmail.com

Phone: 352-871-3979

Hours: Dismissal until 5:30 pm

<http://www.bluewaveafterschool.com/>

## Attendance Matters

*When a student misses:*

**2 days a month, they will miss:**

- **20 DAYS** a year.
- **30 HOURS** of math over the school year.
- **60 HOURS** of reading & writing over the school year.
- **1 YEAR** of school by graduation.

**4 days a month, they will miss:**

- **40 DAYS** a year.
- **60 HOURS** of math over the school year.
- **120 HOURS** of reading & writing over the school year.
- **2 YEARS** of school by graduation.

## Being on Time Matters

*When a student is late or leaves early:*

**10 minutes/day, they miss:**

- **50 MINUTES** a week.
- **1.5 WEEKS** per year.
- **HALF A YEAR** of school by graduation.

**20 minutes/day, they miss:**

- **1 HOUR 40 MINUTES** a week.
- **2.5 WEEKS** per year.
- **1 YEAR** of school by graduation.

**40 minutes/day, they miss:**

- **HALF A DAY** a week.
- **4 WEEKS** per year.
- **1.5 YEARS** of school by graduation.

**1 hour/day, they miss:**

- **1 DAY** a week.
- **8 WEEKS** per year.
- **2.5 YEARS** of school by graduation.

# Blue Wave

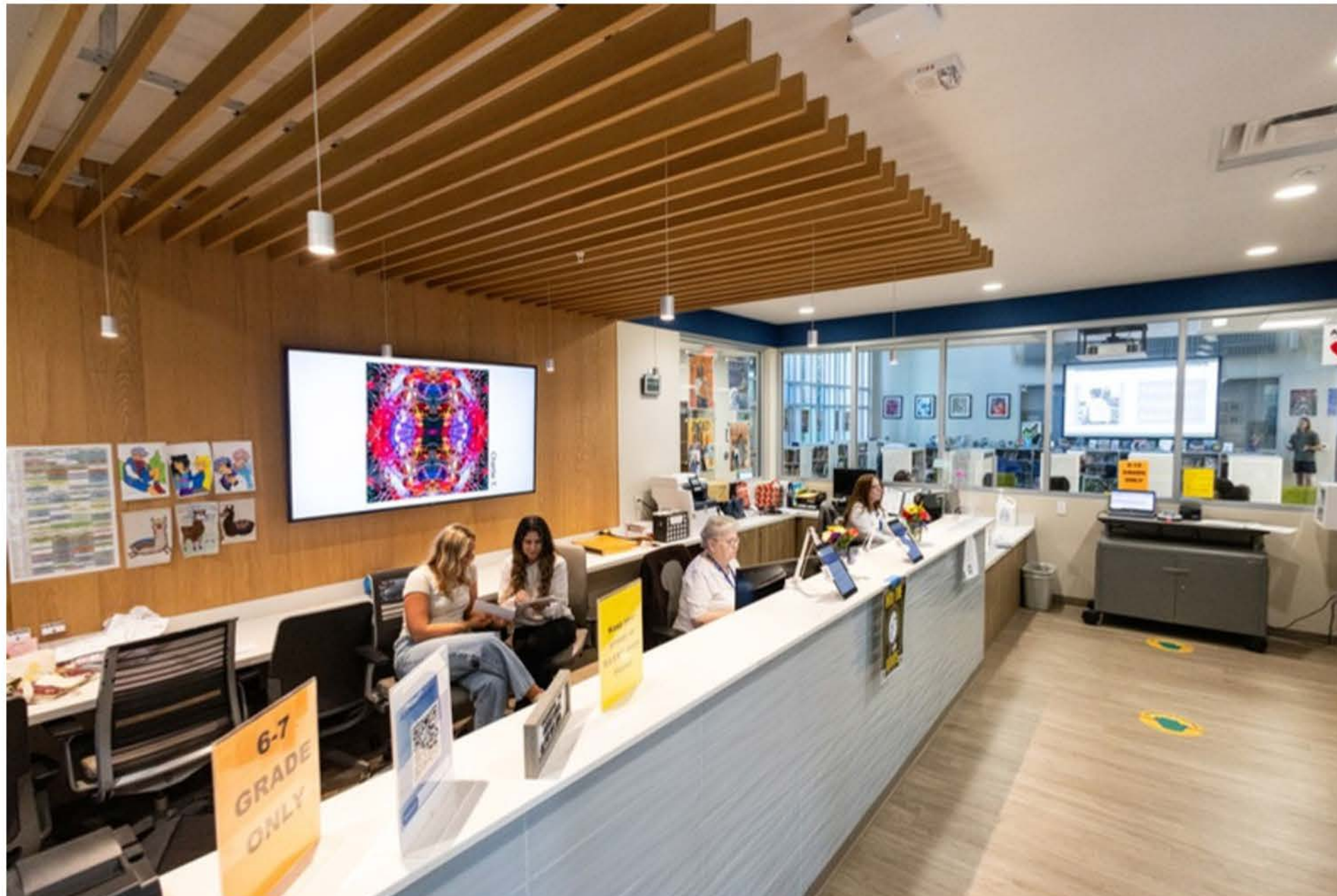
Secondary Family Welcome

## Attendance

Culture

**Report an absence to [attendance@pky.ufl.edu](mailto:attendance@pky.ufl.edu)**

<https://pkyonge.ufl.edu/attendance/>



### **SECONDARY STUDENTS**

#### **Late Check-In (after 8:35 a.m. for MS) – Enter via the WEST Entrance/11th Street**

Check-in with the Gate Guard with a state-issued ID. Follow the Gate Guard's directions for parking.

- Parents/guardians, drop students off as directed by the gate guard, and students will check-in at the Main Office.

### **Early Check-Out – ALL FAMILIES – Enter via the WEST Entrance/11th Street**

***No early checkout during the last 30 minutes of the school day.***

Email [attendance@pky.ufl.edu](mailto:attendance@pky.ufl.edu) regarding early checkout. Check-in with the Gate Guard with a state-issued ID. Follow the Gate Guard's directions for parking.

- Email sent, students checkout in Main Office and meet parents/guardians in the parking lot.
- Email NOT sent, parents/guardians may park vehicles as directed by the Gate Guard, and walk to the Main Office to check students out in person

# Blue Wave

Secondary Family Welcome

## Visiting during School Day



All visitors should enter through the West Entrance/11<sup>th</sup> Street and check in with the Gate Guard.

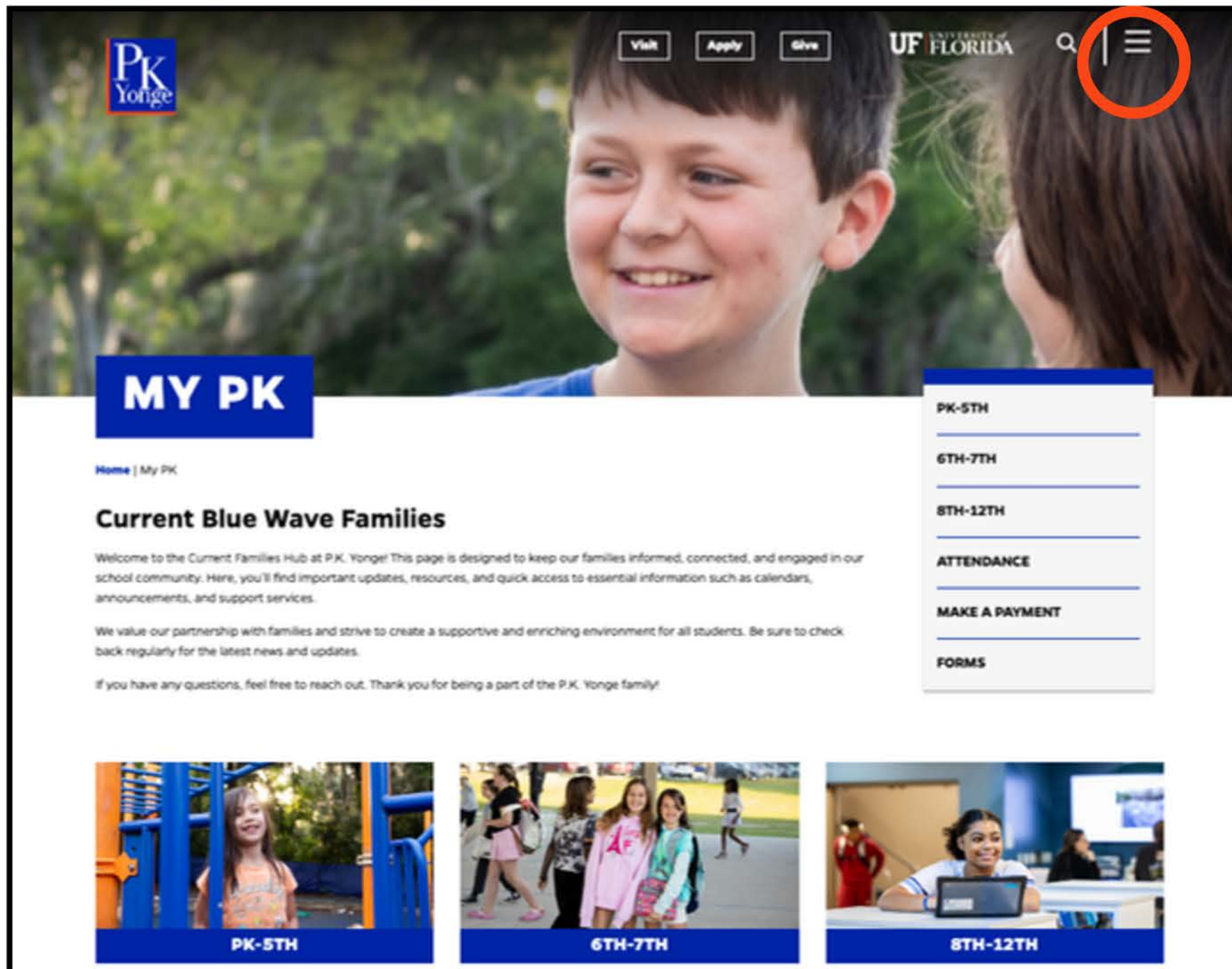
All visitors must have a government-issued ID that will be presented and scanned at the Gate Guard or Main Office.

PK families should make appointments with their student's teachers and staff.

# Blue Wave

## Secondary Family Welcome

myPK



## pkyonge.ufl.edu

- From the menu in the upper right, select current families
- [pkyonge.ufl.edu/my-pk](https://pkyonge.ufl.edu/my-pk)

# Blue Wave

Secondary Family Welcome

## School Calendar



[Home](#) | [School Calendar](#)

Check here for P.K. Yonge events and activities. To change how you view the calendar, click on *List*, *Month*, or *Day* at the top right of the calendar.

## CALENDAR

<input type="text" value="Search for events"/>						
<a href="#">FIND EVENTS</a> <a href="#">LIST</a> <a href="#">MONTH</a> <a href="#">DAY</a>						
<a href="#">&lt;</a> <a href="#">&gt;</a> <a href="#">This Month</a> <b>MAY 2025</b> <a href="#">v</a>						
Sun	Mon	Tue	Wed	Thu	Fri	Sat
<b>27</b> 6:30 PM - 9:00 PM SPRING MUSICAL - CHICAGO	<b>28</b> Senior Go Week	<b>29</b>	<b>30</b> Grades 8-12 E-L&M	<b>1</b> Testing: FAST ELA 6:30 PM - 9:00 PM 8TH-12TH SPRING CONCERT - BAND, MODERN MUSIC, VDA	<b>2</b> Testing: FAST Math	<b>3</b>
<b>4</b>	<b>5</b> Testing: STAR Read Testing: AP Biology Teacher & Staff Appreciation Week	<b>6</b> Testing: Science gr... Testing: Science gr...	<b>7</b> Testing: AP English	<b>8</b> Testing: AP Stats M...	<b>9</b> Testing: AP US Hist... Testing: STAR Math	<b>10</b> 7:00 PM - 11:00 PM PROM
		Testing: Civics EOC Testing: AP Chemis	6:00 PM - 7:00 PM NHS INDUCTION	6:30 PM - 9:00 PM HS BAND CONCERT	Testing: AP US HIST 6:30 PM - 7:30 PM	


<https://pkyonge.ufl.edu/school-calendar/>

# Blue Wave

## Secondary Family Welcome

# Important Dates





[Visit](#)[Apply](#)[Give](#)

UF UNIVERSITY of FLORIDA

## 2025-2026 DATES

### SCHOOL CALENDAR

[Home](#) | [School Calendar](#) | 2025-2026 Dates

### 2025-2026 Calendar Dates

For a comprehensive view of school events, event times, special dismissal times, and other details regarding school activities, please check the School Calendar. Changes and updates to published dates will be shared with families via email, on the Announcements page, and on the [P.K. Yonge Facebook](#) page.

In the event of school cancellations due to hurricanes or other emergencies, additional days will be identified if more than six (6) school days are canceled.

Please review dates carefully. Dates for the P.K. Yonge school year are slightly different from dates published for Alachua County Public Schools.

Dates are provided below and in the [2025-2026 Important Dates](#).

*These dates are tentative until UF publishes their calendar.*

#### FALL 2025

Dates	Events
July 31- August 1	Back-to-School Teacher Symposium
August 4-8	Teacher Professional Learning and Pre-Planning
August 11	First Day of School
August 18	First Day of VPK
August 27	Grades 8-12 E-Learning Day

#### SPRING 2026

Dates	Event
January 5	Holiday (Student)   Teacher Professional Learning
January 6	Holiday (Student)   Teacher Inquiries and Investigations Symposium
January 7	Holiday (Student)   Teacher Work Day
January 8	First Day of Second Semester
January 19	Holiday (Student + Teacher)   Martin Luther King Jr. Day

<https://pkyonge.ufl.edu/school-calendar/25-26-dates/>



- Look on Skyward for their class schedule.
- Students should be dropped off at either 6<sup>th</sup> Street or Gym.
- Students walk in on their own. Parking is limited.
- Student Government will be stationed to assist students find where they need to go. 6<sup>th</sup> Grade teachers are also stationed.
  - lots of people to help direct them if they get lost.
- Teachers help them out for several days to get to the right locations.

# Blue Wave

## Secondary Family Welcome

# PK Big Picture

Culture

### Academics

- We're here to learn
- Check Canvas daily//weekly

### Behavior

- 4 Rs
- See something, say something

### Attendance

- Come to school everyday and on time
- Excused vs. Unexcused

### Home Support

- **We need you!**
- Nightly home check in
- Canvas/Skyward



# Blue Wave

## Secondary Family Welcome

Leadership

# Leadership

# Blue Wave

## Middle School Student Government

- Student Government at PKY is expanding into middle school
- Pilot year for implementation
- 6th graders will have opportunity to apply to serve as “representatives” for their advisory classmates
- Responsibilities will include meeting outside of school day, serving alongside elementary and high school student leaders, ....
- Applications will be available at Club Showcase during Open House



# Blue Wave

Secondary Family Welcome

PKY PTO

Leadership



# Blue Wave

Secondary Family Welcome

PKY PTO

Leadership

## PTO Meeting

Thursday, September 11, 5:30-6:30 pm  
1<sup>st</sup> floor green wing, secondary building

**Looking for grade level parent reps  
specifically in secondary!**

**Stay Connected:** Facebook Group PKY PTO

**SCAN to fill out PTO Interest Form**





# Blue Wave

Secondary Family Welcome



School Community Info

<https://pkyonge.ufl.edu/my-pk/>

- Kim Dotts-Hoehnle - Exceptional Student Education/504 Coordinator
- Kelly Barrett - PK Athletic Director
- Kristy Denton - Santa Fe Achieves
- Sean Johnson and Jaqualia Newsome-Take Stock in Children
- Renee Jost and Libby - University Police Department
- FTC Steel Eels- Robotics Team