



PK
Yonge

Blue Wave

Secondary Family Welcome

at PK...



Everyone can be a **LEADER**

Everyone has **GENIUS**

CHANGE starts with me

Students are **EMPOWERED** to lead their own learning

Educators and families **PARTNER** to develop the whole person

One Wave. One Family.

Blue Wave

Secondary Family Welcome

PK by the numbers



91 years of
excellence

1,420

PreKindergarten to
12th Grade Students

30 communities
represented



school
since
2002

2025 graduates
Florida Bright Futures

59%

faculty **91**

public high school in
north central Florida

#1

Blue Wave

Secondary Family Welcome

9th grade orientation

Student Orientation

Emily Schwiem and Carmen Butifloski, PK School Counselors

Focus: Beginning with the End in Mind: Graduation Requirements, Class Schedule

UF Career Connections Center

Focus: Beginning with the End in Mind - Career Activity

Santa Fe Achieve

Focus: Putting First Things First - Visioning/ Growth Mindset

9th grade PK Teachers

Focus: Shapening the Saw - Connection Building

Kristin Rigney and Jordan Coats, PK Critical Thinking Teachers

Focus: Being Proactive and Putting First Things First - Goal Setting and Prioritizing

Bryce Stevenson, PK Mental Health Coordinator

Focus: Being Proactive - Strong mental health habits in high school

Robbie Brunson, PK Behavior Coach

Focus: Synergy - Safety and Behavior

***Slushies from Sonic and Cheerleading performance*

Blue Wave

Secondary Family Welcome

9th grade orientation

Parents

- **Learn about the Secondary Program**
 - Dr. Pennypacker Hill - Principal
 - Dr. Sheppard - Assistant Principal
- **Parent Workshop about how to support your high schooler**
 - Santa Fe Achieve

Blue Wave

Secondary Family Welcome

school leadership



Dr. Carrie Geiger
Director



Dr. Ashley Pennypacker Hill
Secondary Principal



Dr. Tredina Sheppard
Assistant Principal
for Academic
Achievement



Bryce Stevenson
Middle School
Counselor



Carmen Butfiloski
High School
Counselor



Emily Schweim
High School
Counselor



Robbie Brunson
Secondary
Behavior Coach



Kelly Barrett
Athletic Director

Blue Wave

High School Student Government

- Student Body President: Peyton Janicke
- Student Body Vice President: Javarius Morant
- Student Body Secretary: Norah Pancoast
- Student Body Treasurer: Campbell Johnson
- Senior Senator: Summer Mandrell
- Senior Senator: Sage Parks
- Junior Senator: Chioma Anumba
- Junior Senator: Aurora Martins Rocha
- Junior Representative: Molly Adams
- Junior Representative: Ella Grace
- Junior Representative: Lyla Grossman
- Junior Representative: Harlow Knowles
- Sophomore Senator: Jada Adderly
- Sophomore Senator: Zi'Yair Harvey
- Sophomore Representative: Emily (Ngan) Le
- Sophomore Representative: Isabella McHargue
- Sophomore Representative: Claire Sorgius
- Sophomore Representative: Logan Sprague
- Freshman Senator: Riley Fabulich
- Freshman Senator: Giovanna Rimblas
- Freshman Representative: Sophie Jasper
- Freshman Representative: Avery Sassner
- Advisor: Megan Koppitch



Blue Wave

Secondary Family Welcome

#thePKdifference



- small community of support, everyone knows your name
- students from all backgrounds learn from and with each other
- University of Florida's lab school
- Alumni network, people have paved the way and continue to provide support
- Global experiences
- state of the art facilities
- resources that provide a personalized educational plan

Blue Wave

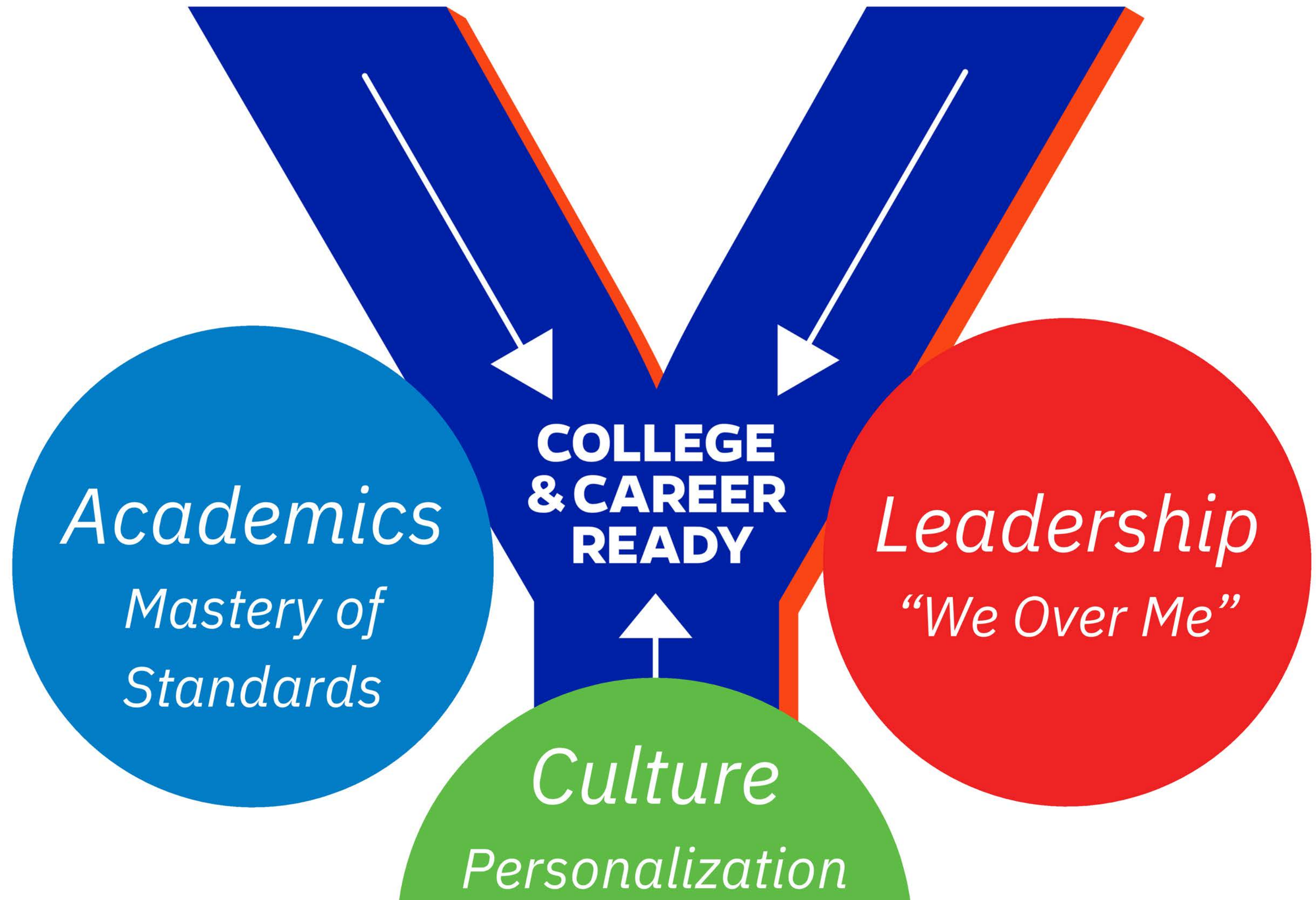
Secondary Family Welcome

student services



- School Resource Officer
- Behavior Coaches
- School Nurse/Clinic
- School Counselors
- School Psychologist
- Exceptional Student Education
- Occupational Therapist
- Speech & Language Therapist





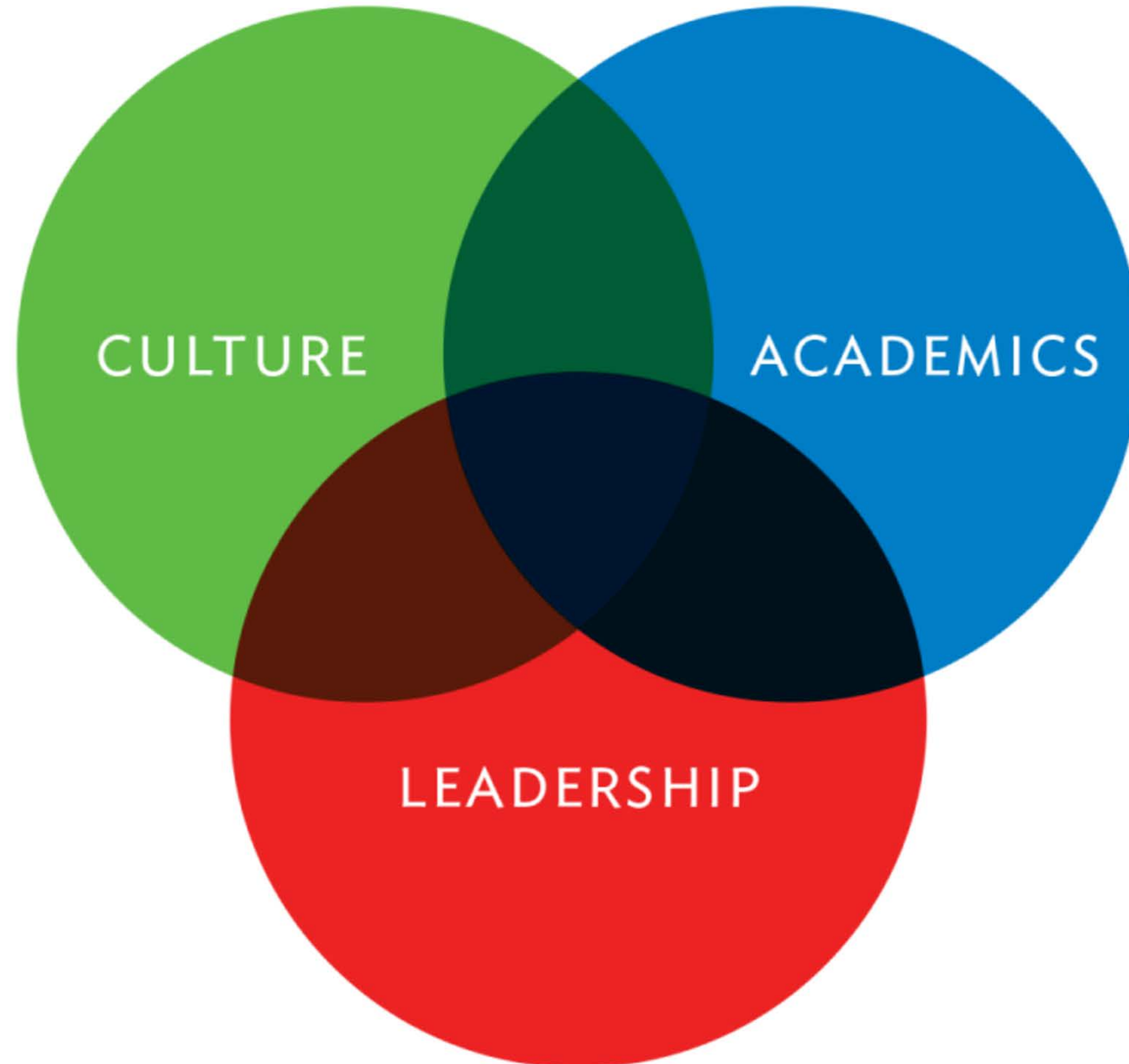
**Begin
With
The
End
In
Mind**



Secondary Family Welcome

where do
graduates go







Blue Wave

Secondary Family Welcome

Academics

High School
Academics

At P.K. Yonge, we are committed to preparing our students for future success by fostering a **future-focused** trajectory.

We provide rigorous academics, career readiness skills, and a supportive environment to ensure our students are well-equipped for both **college and career** pursuits.

Credits

- 4 English credits
- 4 Math credits (one credit must be Algebra 1 and one must be Geometry)
- 3 Science credits (one credit must be Biology 1 and two science credits must have laboratory)
- 3 Social Studies credits (one credit must be US History and World History and .5 credit in Government and Economics)
- 1 Fine arts, performing arts, speech/debate, or practical arts
- 1 Physical Education credit (HOPE)
- .5 financial literacy
- 8 elective credits
 - needed for most colleges and universities-2 subsequent foreign language-offer Spanish

Grade Point Average

- 2.0 or higher

Assessments

- Pass Grade 10 English Language Arts FAST
 - or get a concordant score on SAT/ACT
- Pass Algebra 1 End of Course Exam (EOC)
 - or get a comparable score on Geometry, SAT, ACT
- Take End of Course (EOC) exams that will be 30% of the final grade in
 - Algebra 1
 - Geometry
 - Biology
 - US History

Additional PK Graduation Requirements

Senior Research

- P.K. Yonge graduates complete research coursework and a required research project.
 - authentic
 - focused in public service
 - design, implement, and disseminate to various stakeholders a project of interest during their final year at P.K. Yonge Developmental Research School.

Service

- P.K. Yonge students complete a minimum of 75 service hours by April 1 of senior year.

World Language

- Two courses in a foreign language. PK offers Spanish.

As part of our mission, we emphasize preparation for **Florida Bright Futures** scholarships, ensuring students understand the academic and extracurricular requirements to qualify for these valuable opportunities.

Florida Academic Scholars (FAS) covers **100% of tuition and fees** at a **Florida public university**, along with a \$300 stipend for books and supplies.

Florida Medallion Scholars (FMS) covers **75% of tuition and fees** at a **Florida public university**, with a \$300 stipend for books and supplies.

Florida Gold Seal CAPE Scholars (GSC) covers **tuition** for eligible **vocational** programs, including up to 60 credit hours at a **community college or technical school**.

Florida Gold Seal Vocational Scholars (GSV) covers **tuition** for eligible **vocational** programs, including up to 60 credit hours at a **community college or technical school**.

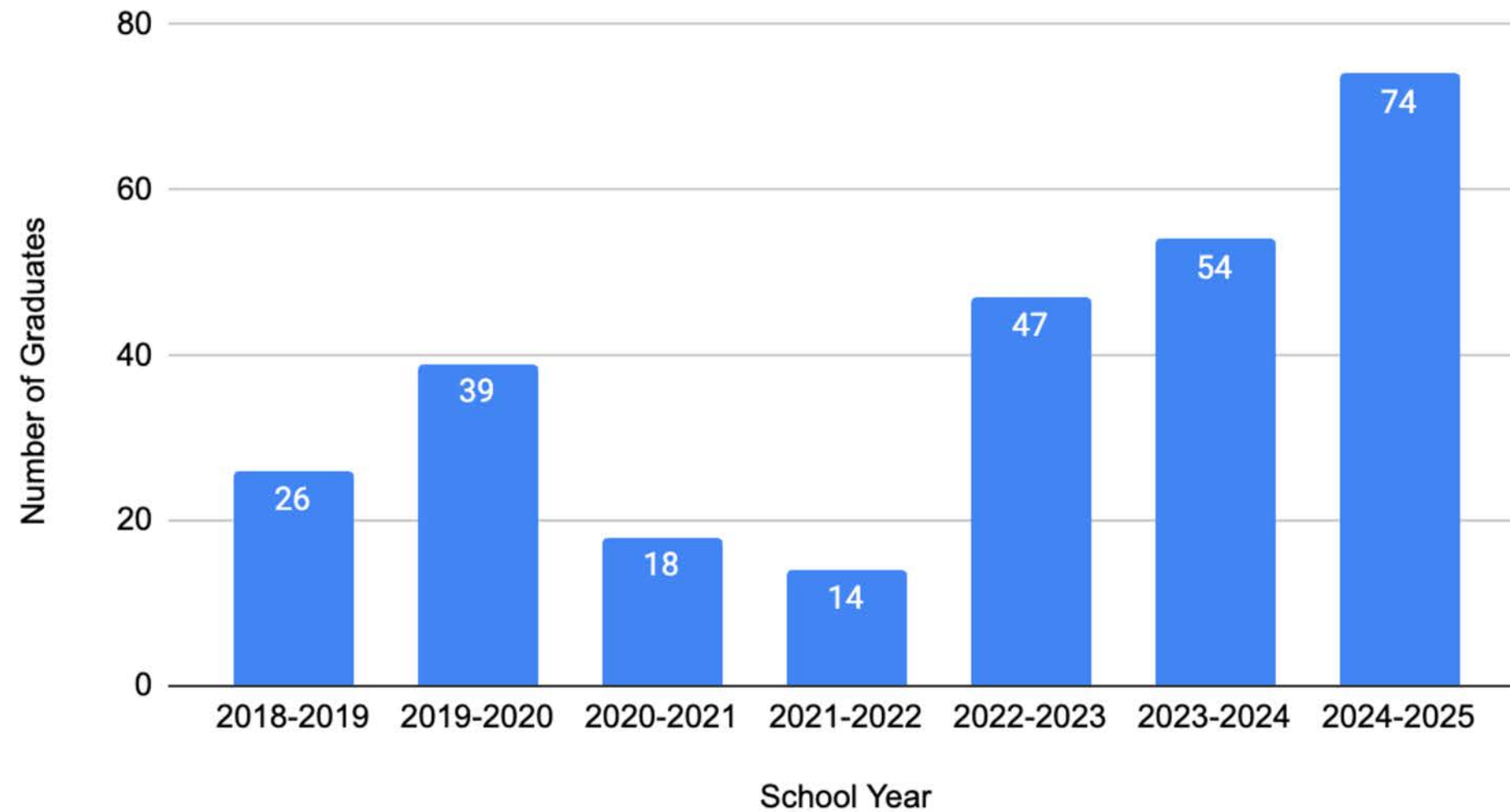
Blue Wave

at PK...

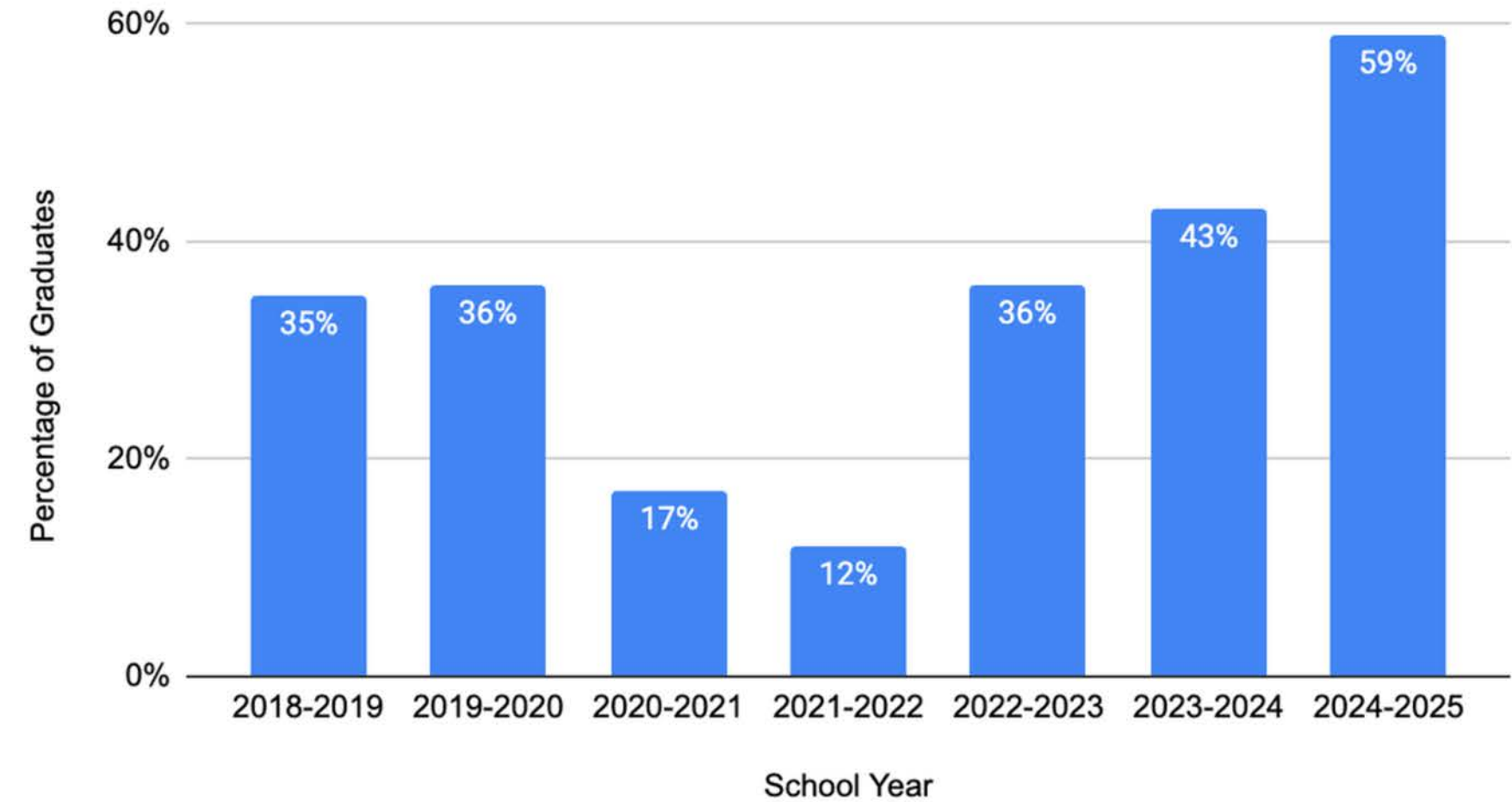
74 Bright Futures scholarships awarded in 2025
~\$1.5M Bright Futures scholarship money awarded
in 2025

Blue Wave | at PK...

Number of Bright Futures Graduates



Percentage of Graduates vs. School Year



AP Capstone Diploma Program

- Available to **all** PK high school students
- AP Capstone qualifies students for 100% Florida

Bright Futures

- Effective July 1, 2025 per FL Bill CS/CS/SB 270

- AP Capstone qualifies students for 100% Florida Bright Futures
- Must still meet Florida Academic Scholars GPA and service/work hour requirements
- AP Capstone diploma replaces SAT/ACT/CLT test score requirement
- Class of 2026 (w/ AP Research and AP Seminar)
 - 4 Qualifying Scores any subject
- Class of 2027 and beyond (w/ AP Research and AP Seminar)
 - 4 Qualifying Scores which must include (1) English, (1) Math, (1) Social Studies or Art History, (1) choice

By expanding access to advanced coursework and financial aid opportunities,
we strive to make higher education and career opportunities attainable for every student.

Blue Wave

Secondary Family Welcome

who to contact
for help



Ms. Carmen Butfiloski
High School Counselor
Last Names A-K
cbutfiloski@pky.ufl.edu



Ms. Emily Schweim
High School Counselor
Last Names L-Z
eschweim@pky.ufl.edu



Mr. Bryce Stevenson
Middle School Counselor
bstevenson@pky.ufl.edu

- **PK High School Program Emphasis**
- PK Core High School Courses
- 9th Grade Academics



Blue Wave

Secondary Family Welcome

High School Program Emphasis

Academics

- Public Service
- College & Career Readiness
- Student-led Research
- Advanced Placement Access for All at HS
- Accelerated Curriculum and Classes for MS/HS
- Career & Technical Education
- PK Pathways



Public Service

- Core value of PK is community - “We Over Me”
- K-12 students are taught the value of accepting differences, working collaboratively, and being a good citizen
- Required service hours for graduation
- Coursework
 - Public Service Leadership
 - Public Service Communication
 - Project Management and Experiential Learning in Public Service

College & Career Readiness (CCR)

- PK has a strong academic focus on college and career readiness
- Invested in college & career readiness courses at 11th grade
- In CCR, students receive SAT and ACT test prep and tutoring, university visits, interview and resume preparation, scholarship application assistance, and one-one-one coaching for post-secondary decisions

Student-Led Research

- PK believes it is important for students to be exposed to and conduct research as they prepare for university and career
- High school research graduation requirement
 - Public Service Research and/or AP Research

AP English Courses

- Pre-AP English 1
- Pre-AP English 2
- AP English Language Composition
- AP English Literature

AP Math Courses

- AP Pre-Calculus
- AP Calculus AB
- AP Calculus BC
- AP Statistics

AP Science Courses

- AP Biology
- AP Chemistry
- AP Environmental Science

AP Computer Science Courses

- AP Computer Science Principles
- AP Computer Science A

AP Social Studies Courses

- Pre-AP World History/World Geography (8th Grade)
- AP Human Geography
- AP World History
- AP U.S. History
- AP Microeconomics
- AP U.S. Government

AP World Languages Courses

- AP Spanish Language
- AP Spanish Literature

AP Art Courses

- AP Studio Art 2D

AP Capstone Courses

- AP Seminar
- AP Capstone Research

Provide an opportunity for each student
to FOCUS ***elective*** time and go in-depth
within a passion area of study

Academic Electives
Computer Science with AI
Engineering

Digital Design & Entrepreneurship
Health & Human Performance
Modern Music & Entrepreneurship

- Can earn industry certifications
- Can earn Florida Bright Futures Gold Seal scholarships

CTE Programs at PK

- Careers in Public Service (built into core)
- WordPress
- Ecology Conservation and Management
- Computer Science with AI
- Engineering
- Digital Design & Entrepreneurship
- Modern Music & Entrepreneurship
- Health & Human Performance

Academic Electives - *Accelerating Future Scholars*

- Additional academic electives and AP coursework across academic disciplines

Computer Science with AI - *Mastering Artificial Intelligence, Innovation, and Future Technologies*

- CTE certifications
- Courses in CS with an emphasis in AI

Engineering - *Building Future Innovators*

- CTE certifications
- Courses in Engineering including Digital Electronics

Digital Design & Entrepreneurship - *Shaping Creative Problem Solvers and Community Leaders*

- CTE certifications
- Courses in Digital Design and Business

Health & Human Performance - *Empowering Future Leaders in Health Professions*

- CTE Certifications
- Courses in science emphasizing human body systems and allied health fields

Modern Music & Entrepreneurship - *Inspiring Creative Innovators in Performance, Production, and Industry*

- CTE certifications
- Courses in Music Production and Business

Xello

- College and Career Readiness platform for K-12
- Provides personalized information to each student

UF Career Connection Center (C3)

- Partnered with UF Career Connection Center to provide additional opportunities and exposure to post-secondary planning

Santa Fe Achieves

- SF Post Secondary Mentorship
- Support Funding: Eligible students can qualify for a book stipend and/or tuition scholarship

Blue Wave

Secondary Family Welcome

Academics

- PK High School Program Emphasis
- **PK Core High School Courses**
- 9th Grade Academics



English

Spanish

Math

Science

Social Studies

Public Service

Research

Academic Success

Pathway Electives

Other Electives

9th Grade - Pre-AP English 1

10th Grade - Pre-AP English 2

11th Grade - AP English Language or English 3 Honors

12th Grade - AP English Literature or English 4 Honors

4 English credits required for graduation.

- Spanish 1 and 2 (suggested)
- Spanish 3 Honors
- Spanish 4 Honors
- AP Spanish Language
- AP Spanish Literature

All students at PK will take 2 language courses.

Two sequential credits of foreign language required for Bright Futures.

8th Grade - Algebra 1 Honors

9th Grade - Geometry Honors

10th Grade - Algebra 2 Honors/Choice

11th Grade - Choice

12th Grade - Choice

4 Math credits required for graduation.

Algebra 1 and Geometry required for graduation.

- Algebra 2 Honors
- Probability & Statistics with Applications Honors
- AP Pre-Calculus
- AP Calculus AB
- AP Calculus BC
- AP Statistics

4 Math credits required for graduation.
Algebra 1 and Geometry required for graduation.

9th Grade - Biology Honors or AP Biology

10th Grade - Choice/Chemistry Honors

11th Grade - Choice/Chemistry Honors

12th Grade - Choice/Chemistry Honors

3 Science credits required for graduation.
Biology credit required for graduation.

- AP Biology
- Chemistry 1 Honors
- AP Chemistry
- Environmental Science Honors
- AP Environmental Science
- Physics Honors

3 Science credits required for graduation.
Biology credit required for graduation.

8th Grade - Pre-AP World History/Geography

9th Grade - AP Human Geography or World History Honors

10th Grade - US Government Honors or AP US Government

11th Grade - US History Honors or AP US History

12th Grade - Economics with Personal Finance Honors or AP
Microeconomics

3 Social Studies credits required for graduation.

World History, Government, and Economics required for graduation.

9th Grade - Public Service Leadership

9th Grade - Critical Thinking and Study Skills

10th Grade - Public Service Communication

11th Grade - Experiential Learning in Public Service

11th Grade - Career Research and Decision Making

12th Grade - Senior Research

Academic Success Supports

- Investment in tutoring in many subjects
- Academic study hall
- Teacher help sessions
- Test prep tutoring
- Varsity Tutors



- Two-Dimensional Art Studio 1, 2, 3
- Portfolio Development: Two-Dimensional Design Honors
- AP Studio Art



Blue Wave

Secondary Family Welcome

Performing Arts Electives

Academics

- Vocal and Dramatic Arts
- Modern Music
- Band



- HOPE: Physical Education Variation ***required for graduation***
- Weight Training 1, 2, 3
- Power Weight Training
- Comprehensive Fitness



Blue Wave

Secondary Family Welcome

Academics

- PK High School Program Emphasis
- PK Core High School Courses
- **9th Grade Academics**



English

- Pre-AP English 1

Math

- Geometry Honors*

Science

- Biology Honors OR
- AP Biology

Social Studies

- World History Honors OR
- AP Human Geography

Academic Success

- Critical Thinking AND
- Public Service Leadership

*Students math progression needs will be honored.

- Spanish 1 and 2 (suggested)
- Spanish 3 Honors
- Spanish 4 Honors
- AP Spanish Language
- AP Spanish Literature

All students at PK will take 2 language courses.

Two sequential credits of foreign language required for Bright Futures.

Academic Electives - *Accelerating Future Scholars*

- Additional academic electives and AP coursework across academic disciplines

Computer Science with AI - *Mastering Artificial Intelligence, Innovation, and Future Technologies*

- CTE certifications
- Courses in CS with an emphasis in AI

Engineering - *Building Future Innovators*

- CTE certifications
- Courses in Engineering including Digital Electronics

Digital Design & Entrepreneurship - *Shaping Creative Problem Solvers and Community Leaders*

- CTE certifications
- Courses in Digital Design and Business

Health & Human Performance - *Empowering Future Leaders in Health Professions*

- CTE certifications
- Courses in science emphasizing human body systems and allied health fields

Modern Music & Entrepreneurship - *Inspiring Creative Innovators in Performance, Production, and Industry*

- CTE certifications
- Courses in Music Production and Business

Blue Wave

Secondary Family Welcome

9th Grade
Other Electives

Academics

- Band
- Vocal and Dramatic Arts
- HOPE - **required for graduation**
- 2D Studio Art 1



Blue Wave

Secondary Family Welcome

Academics

Tools for the High School Journey





- Make sure your info is correct
- First email should be sent automatically. If you don't remember your password, choose "forgot password" to reset.
- Access through Quick Links on website

- Student Information System
- Address, Phone Number
- Report Cards
- Transcripts, Test Scores
- Behavior Referrals
- Attendance

PLEASE KEEP SKYWARD UPDATED

***FOR HELP, EMAIL: skywardhelp@pky.ufl.edu ***

<https://pkyonge.ufl.edu/grading/>

PK is a tech forward school

Chromebooks

- Issued when every student form is turned in
- Become familiar with Canvas immediately
- Devices are monitored
- No personal computers on campus

Canvas

- Online learning management system
- All classes use it

Google Drive

1. EVERY student gets one!
2. EVERY teacher uses technology to support student learning.
3. The Chromebook must be brought to school EVERY day, fully charged.
4. Students are responsible for loss or damages.
5. We provide a case.
6. Your child will be assigned a Google Suite account.
7. Students are responsible for their online actions and conduct.
8. Chromebooks must be returned at end of year.
9. Forms must be signed to get a Chromebook.
10. Help is available! [Link to Tech Support](#)

Chromebooks will be issued once a student's forms are complete in Skyward.



- Online Learning Management System
- All courses have a Canvas course
- Course Syllabi
- Message the Teacher (or email)
- **Pair your parent account**
- **Grades are most up to date in Canvas**



<https://pkyonge.ufl.edu/canvas/>

Blue Wave

Secondary Family Welcome

Communicating with Teachers



Students: Email through Canvas

Parents: **Email is typically the best way to communicate with us. Please allow 48 hours for a response.**

PK main office at 352-392-1554



<https://pkyonge.ufl.edu/directory/>

- Each course has a syllabus
- Course description, goals
- Standards taught, materials used (teacher and student)
- Communication protocols
- Policies



<https://pkyonge.ufl.edu/grading/>

Blue Wave

Secondary Family Welcome

25-26

Bell Schedule



Campus is open 7:30-4:00

K-5th Grade School Day

- 8:00am – 2:45pm – Monday, Tuesday, Thursday, Friday
- 8:00am – 1:40pm – Wednesday

6th-7th Grade School Day

- 8:20am – 3:03pm – Monday, Tuesday, Thursday, Friday
- 8:20am – 1:40pm – Wednesday

8th-12th Grade School Day

- 8:30am – 3:00pm – Monday-Friday

Must be off campus, at BW Afterschool, or in a supervised activity 15 minutes after dismissal

<https://pkyongie.ufl.edu/my-pk/2025-2026-bell-schedules/>



Before School

- 7:30-8:20 a.m. Cafeteria

After School

- 3:00-4:00 p.m. Academic Study Hall

Must be off campus, at BW Afterschool, or in a supervised activity 15 minutes after dismissal

Supervised Activities include:

- Scheduled Athletics activities
- Performing Arts rehearsal
- Club Meetings
- Academic Study Hall or Tutoring

Supervised Activities do NOT include:

- being in the gym if not in at an Athletics activity
- waiting to be picked up outside the PAC
- hanging out around campus without a faculty sponsor

Blue Wave

Secondary Family Welcome

myPK



The screenshot shows the website for P.K. Yonge at the University of Florida. The header includes the P.K. Yonge logo, navigation buttons for 'Visit', 'Apply', and 'Give', the University of Florida logo, a search icon, and a hamburger menu icon (circled in red). The main content area is titled 'MY PK' and includes a breadcrumb trail 'Home | My PK'. Below this is a section for 'Current Blue Wave Families' with a welcome message and a paragraph about the partnership with families. A sidebar on the right lists links for 'PK-5TH', '6TH-7TH', '8TH-12TH', 'ATTENDANCE', 'MAKE A PAYMENT', and 'FORMS'. At the bottom, there are three image tiles for 'PK-5TH', '6TH-7TH', and '8TH-12TH'.

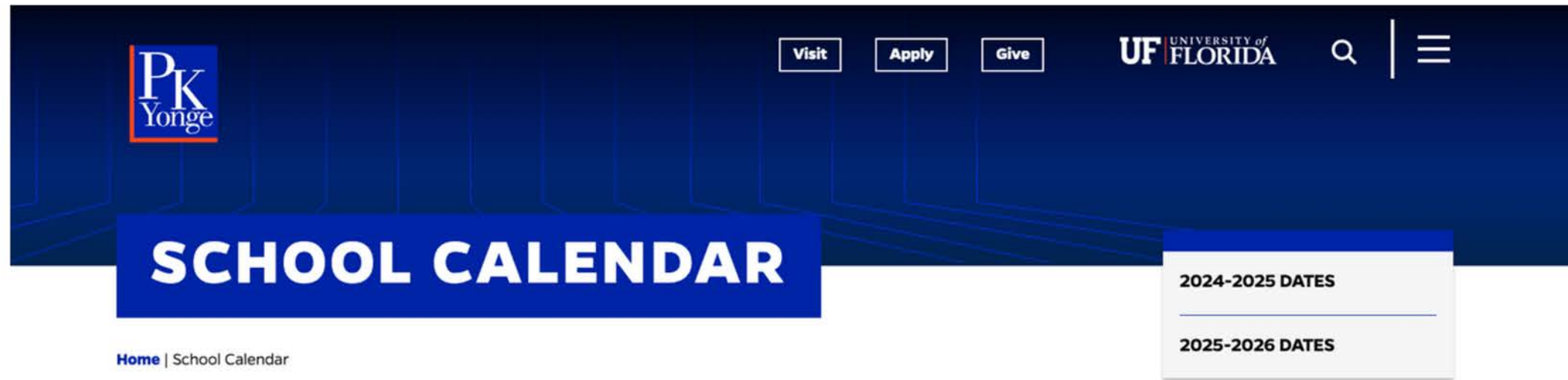
pkyonge.ufl.edu

- From the menu in the upper right, select current families
- pkyonge.ufl.edu/my-pk

Blue Wave

Secondary Family Welcome

School Calendar



[Home](#) | [School Calendar](#)

Check here for P.K. Yonge events and activities. To change how you view the calendar, click on *List*, *Month*, or *Day* at the top right of the calendar.

CALENDAR

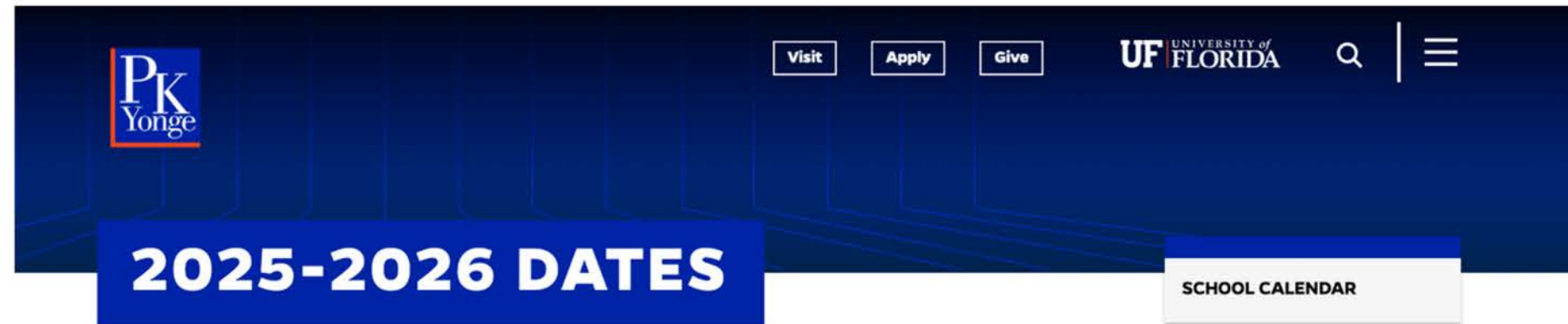
<input type="text" value="Search for events"/>						
FIND EVENTS LIST MONTH DAY						
< > This Month MAY 2025 v						
Sun	Mon	Tue	Wed	Thu	Fri	Sat
27 6:30 PM - 9:00 PM SPRING MUSICAL - CHICAGO	Senior Go Week		Grades 8-12 E-Lear...	Testing: FAST ELA ... 6:30 PM - 8:30 PM 8TH-12TH SPRING CONCERT - BAND, MODERN MUSIC, VOA	Testing: FAST Math...	
4	Testing: STAR Read... Testing: AP Biology...	Testing: Science gr... Testing: Science gr...	Testing: AP English ...	Testing: AP Stats m...	Testing: AP US Hist... Testing: STAR Math...	7:00 PM - 11:00 PM PROM
	Teacher & Staff Appreciation Week		Testing: Civics EOC... Testing: AP Chemis...	6:00 PM - 7:00 PM NHS INDUCTION	6:30 PM - 8:00 PM HS BAND CONCERT	Testing: AP US Hist... 5:30 PM - 7:30 PM

<https://pkyonge.ufl.edu/school-calendar/>

Blue Wave

Secondary Family Welcome

Important Dates



[Home](#) | [School Calendar](#) | 2025-2026 Dates

2025–2026 Calendar Dates

For a comprehensive view of school events, event times, special dismissal times, and other details regarding school activities, please check the School Calendar. Changes and updates to published dates will be shared with families via email, on the Announcements page, and on the [P.K. Yonge Facebook](#) page.

In the event of school cancellations due to hurricanes or other emergencies, additional days will be identified if more than six (6) school days are canceled.

Please review dates carefully. Dates for the P.K. Yonge school year are slightly different from dates published for Alachua County Public Schools.

Dates are provided below and in the [2025-2026 Important Dates](#).

These dates are tentative until UF publishes their calendar.

FALL 2025

Dates	Events
July 31- August 1	Back-to-School Teacher Symposium
August 4-8	Teacher Professional Learning and Pre-Planning
August 11	First Day of School
August 18	First Day of VPK
August 27	Grades 8-12 E-Learning Day

SPRING 2026

Dates	Event
January 5	Holiday (Student) Teacher Professional Learning
January 6	Holiday (Student) Teacher Inquiries and Investigations Symposium
January 7	Holiday (Student) Teacher Work Day
January 8	First Day of Second Semester
January 19	Holiday (Student + Teacher) Martin Luther King Jr. Day

<https://pkyonge.ufl.edu/school-calendar/25-26-dates/>

Blue Wave

Secondary Family Welcome

Pick Up &
Drop Off



Elementary School

- West Entrance - 11th Street (top circle)

Middle/High School

- Main Entrance - 6th Street
- South Entrance - Gym/16th Ave

Student Drivers

- 11th Street (dirt lot near Depot Ave)

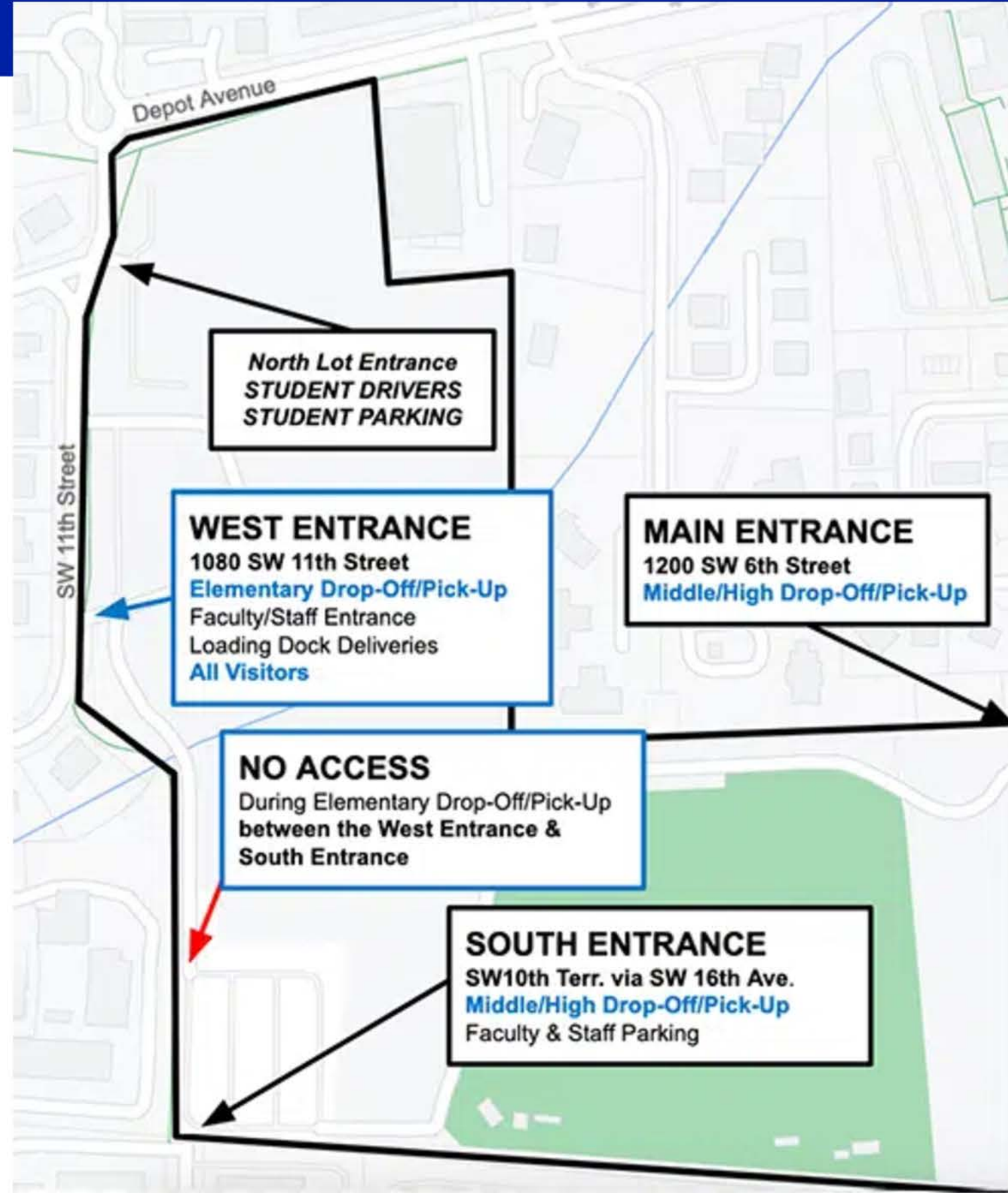
Student walkers/bikers will not be released outside of the 6th Street gate due to traffic concerns.

<https://pkyongie.ufl.edu/traffic-parking/>

Blue Wave

Secondary Family Welcome

Traffic & Parking



Blue Wave

Secondary Family Welcome

Visiting during School Day



All visitors should enter through the West Entrance/11th Street and check in with the Gate Guard.

All visitors must have a government-issued ID that will be presented and scanned at the Gate Guard or Main Office.

PK families should make appointments with their student's teachers and staff.

Blue Wave

Secondary Family Welcome

First Day of School



- Students should be dropped off at either 6th Street or Gym.
- Students walk in on their own. Parking is limited.
- Student Government will be stationed to assist students find where they need to go. 6th Grade teachers are also stationed.
- They will receive their 1st period location during orientation and will report to those locations, but also lots of people to help direct them if they get lost.
- Teachers help them out for several days to get to the right locations.



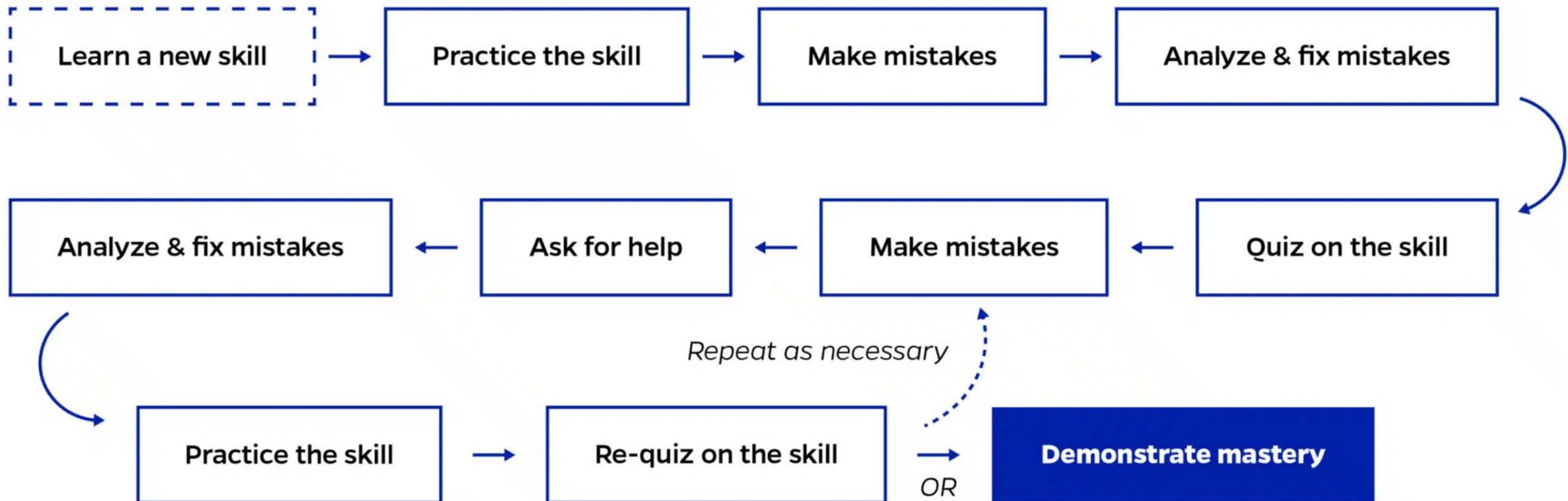
- Class schedules can currently be seen on Skyward
- Students are getting a paper copy in orientation (right now)
- If you would like a schedule change request, fill out a google form
 - counselors will address change requests and communicate with students and families
 - not all schedule requests can be accommodated
 - request changes are due by end of day August 13th
- Balancing of classes occurs beyond week 1 of school



- Reasons to request a change
 - AP to Bio or Bio to AP, level changing
- Reasons to not request a change
 - my friend is in that course and I want to change
 - teacher preference
 - preference to which period you have a specific course

**always feel comfortable reaching out to your counselor

put the slide of the counselors as the next slide again



Formative Assignments - 20%

- Daily/weekly coursework that builds

Summative Assignments - 75%

- Tests, Quizzes

Habits of Work - 5%

- Social responsibility
- Focus, engagement, and effort
- Quality of Work
- Timeliness of Work Completion

<https://pkyonge.ufl.edu/grading/>

Mastery Language	Points Value Rubric	Letter Grade	Range (4-point grade system)
Mastery	4	A	3.51 - 4.0
Proficient	3.5	B	3.01 - 3.5
Beginning	3	C	2.51 - 3
Not Meeting	2.5	D	2.01 - 2.5
No Evidence	1	F	.01 - 2.0
No Evidence	0	F	0

As students mature as independent learners, we want them to:

- Build skills for working independently toward their academic goals
- Students engage with school while they're not on PK campus

They are/will:

- Expected to access their courses through Canvas
- Continue working on school tasks, assignments, and practice
 - Teachers will provide support and direction to students in advance of each eLearning Day so students and parents have a clear understanding of what students should be working on while away from campus.

Check school calendar for eLearning Days.

- Canvas paired parent account
 - Check for classwork and homework completion
 - Identify areas that more support might be needed
 - Grades - more up-to-date on Canvas than Skyward
- Skyward
 - Transcript
 - Test Data
 - FAST Goal - on or above grade level (3+)
 - PM1, PM2, PM3
- Progress Reports and Report Cards on Skyward

Student Expectations

- Prioritize school
- Complete classwork and homework
- Focus on learning
- Attend school regularly
- Behave as a good citizen both in and out of school
- Ask for help

Parent Partnerships

- Help student attend school regularly including reducing tardies and early check-outs
- Be familiar with home resources
- Know your student's data
- Communicate with the teacher

Blue Wave

Secondary Family Welcome

Open House

Academics

8-12 Grade Open House
Thursday, September 4
5:30-7:00
More Info Coming Soon





Blue Wave

Secondary Family Welcome

Culture

Culture

Blue Wave

Being a Part of a
PreK-12 School

Culture

Cross-age Learning Buddies



Pre-K-12 Faculty



Student Aides



Blue Wave Athletics



Blue Wave

Secondary Family Welcome

Clinic and
School Nurse

Culture

- Located in elementary lobby
- nurse@pky.ufl.edu

<https://pkyonge.ufl.edu/clinic/>



Blue Wave

Secondary Family Welcome

Safety

Culture



Gate Guard



University Police Department Resource Officer

Blue Wave

Secondary Family Welcome

Daily Announcements

Culture

- Every day on PA system for secondary
- Also posted to website



<https://pkyonge.ufl.edu/daily-announcements/>

- Secondary Students are expected to abide by the Student Code of Conduct and emulate the 4 Rs: Responsible, Respectful, Resilient, Ready.
- Points are given to students if they receive a behavior referral
 - When a student reaches or exceeds 5 points, they are put on a behavior notice.
 - If a student reaches or exceeds 10 points during a single school year, they will be recommended for dismissal from PKY.
- The Principal/designee is responsible for school discipline and has a reasonable degree of discretion in determining the severity of misconduct and the appropriate consequence. (Section 3, 2025-2026 Code of Conduct)

Blue Wave

Secondary Family Welcome

The 4 Rs

Culture



4R_s

RESPONSIBLE

RESPECTFUL

RESILIENT

READY

- Page 23 of 25-26 Code of Conduct
- All private parts are and remain covered; these include chests, buttocks, and genital areas.
- Clothing that represents hate speech is disruptive to the learning environment and will not be tolerated.

<https://pkyonge.ufl.edu/policies/>

P.K. Yonge



Wireless Communication Device Policy

In accordance with Florida HB 1105

K-8th Grade Students
are **not** allowed to use
wireless
communication
devices **any time from
the start of the
instructional day to
the end of the
instructional day.**

**9th-12th Grade
Students** are **not**
allowed to use
wireless
communication
devices **during
instructional time.**
Devices may not be
kept on their person.

**Students in violation of the policy will
receive an automatic referral and will
have their devices confiscated.**

Confiscated devices will only be
released to a parent.

*Wireless communication devices include but are not limited to cell phones
and/or auxiliary/ancillary devices such as watches and ear buds.*

Attendance Matters

When a student misses:

2 days a month, they will miss:

- **20 DAYS** a year.
- **30 HOURS** of math over the school year.
- **60 HOURS** of reading & writing over the school year.
- **1 YEAR** of school by graduation.

4 days a month, they will miss:

- **40 DAYS** a year.
- **60 HOURS** of math over the school year.
- **120 HOURS** of reading & writing over the school year.
- **2 YEARS** of school by graduation.

Being on Time Matters

When a student is late or leaves early:

10 minutes/day, they miss:

- **50 MINUTES** a week.
- **1.5 WEEKS** per year.
- **HALF A YEAR** of school by graduation.

20 minutes/day, they miss:

- **1 HOUR 40 MINUTES** a week.
- **2.5 WEEKS** per year.
- **1 YEAR** of school by graduation.

40 minutes/day, they miss:

- **HALF A DAY** a week.
- **4 WEEKS** per year.
- **1.5 YEARS** of school by graduation.

1 hour/day, they miss:

- **1 DAY** a week.
- **8 WEEKS** per year.
- **2.5 YEARS** of school by graduation.

Blue Wave

Secondary Family Welcome

Attendance

Culture

Report an absence to attendance@pky.ufl.edu



<https://pkyongie.ufl.edu/attendance/>

Early Check-Out – ALL FAMILIES – Enter via the WEST Entrance/11th Street

No early checkout during the last 30 minutes of the school day.

Email attendance@pky.ufl.edu regarding early checkout. Check-in with the Gate Guard with a state-issued ID. Follow the Gate Guard's directions for parking.

- Email sent, students checkout in Main Office and meet parents/guardians in the parking lot.
- Email NOT sent, parents/guardians may park vehicles as directed by the Gate Guard, and walk to the Main Office to check students out in person

2024-2025 High School Clubs

- Art Collective
- Best Buddies
- BSU
- BluePrint/AIGA
- Blue Wave GSA
- Creative Computing Club
- Debate Team
- ECO
- FCA
- Feminist Club
- Global Awareness
- Justice and Autism in Motion Club
- HOSA/Health Sciences Club

- Key Club
- Love for the Elders
- Spread the Love
- Peer Tutoring
- Pre-Collegiate Club
- Thespians
- UNICEF

Other 2024-2025 Extracurriculars

- FIRST Robotics Team
- Color Guard/Winter Guard
- Jazz Band
- Indoor Percussion
- Fall Play
- Spring Musical



Blue Wave

Honor Societies

Culture

- National Art Honor Society
- National English Honor Society
- National Hispanic Honor Society
- National Honor Society
- National STEM Honor Society
- National Technical Honor Society
- National Tri-M Honor Society



- Color Guard/Winter Guard
- Jazz Band
- Indoor Percussion
- Fall Play
- Spring Musical
- Marching Band



Blue Wave

Robotics

Culture



FTC Robotics Team
Steel Eels



FRC Robotics Team
Roaring Riptide

Middle School Athletics

- Cross Country
- Swimming
- Boys & Girls Basketball
- Football
- Volleyball
- Cheer
- Boys Soccer
- Baseball - P.K. arranges teams through Gatorball

Junior Varsity and Varsity Athletics

- Cross Country
- Volleyball
- Swimming
- Football
- Girls & Boys Golf
- Girls & Boys Basketball
- Girls & Boys Soccer
- Girls & Boys Tennis
- Softball
- Baseball
- Track & Field
- Football, Basketball, and Competitive Cheer

<https://pkyonge.ufl.edu/athletics/athlete-hub/>

<https://pkyonge.ufl.edu/teams-and-schedules/>

Blue Wave

24-25 Athletic Highlights

Culture

4 District
Champion
Teams
Boys Basketball,
Girls Soccer,
Boys Tennis, Girl Tennis

Regional Team
Championship
1 Boys
Tennis

10
College Signees

2
State Medalists
Katelyn Huber- 3rd
Jeremiah Sallet- 7th



All-Area Athletes
26
as of 5/30/25

136
Regional Athletes
12
Regional Teams

36
State Athletes
5 State
Teams

18
Varsity Teams

- All student-athletes need a P.K. Yonge Athletic Clearance profile.
 - <https://athleticclearance.fhsaahome.org/>
 - If you are prompted to override your student's profile, please contact the Athletic Clearance help email.
- Upload your current physical, parental consent form, and 2025-2026 NFHS certificates. Forms are located on Athletic Clearance.
- This system allows us access to emergency contact information and automates reminders for paperwork.
- Students must have up-to-date physicals and consent forms to participate in any conditioning or practices.

Blue Wave

PK Gymnasium

Culture



Coming Soon **P.K. Yonge Gymnasium**

Final Design Planning

Summer/Fall 2025

Breaking Ground

Spring 2026



Scan the QR Code to help support
the building of the gymnasium



Blue Wave

Collegiate-Like Campus

Culture



Blue Wave | Cafeteria

Culture



Outdoor Lunch Cafe

- Part of the Alachua County Schools Food Program
- Must fill out Free/Reduced Application if you are interested
- MySchoolBucks
 - Menus Online

Lunch Periods

- 6-7 Lunch
- 8-9 Lunch
- 10-12 Lunch

- Breakfast
 - Reduced \$0.30
 - Paid \$1.50
- Lunch
 - Reduced \$0.40
 - Paid \$2.75

Blue Wave

International Activities

Culture



PK Global
Summer 2024



Environment & Conservation
Galapagos



PK Global
Summer 2024



Language Immersion & Culture
Panama



PK Global
Summer 2024



Robotics & Engineering
Japan



Blue Wave

BluePrint

Culture



Blue Wave

Yearbook & School Newspaper

Culture



Blue Wave

Secondary Family Welcome

Get Involved!

Culture





Blue Wave

Secondary Family Welcome

Leadership

Leadership

Blue Wave

High School Student Government

Leadership

- Student Body President: Peyton Janicke
- Student Body Vice President: Javarius Morant
- Student Body Secretary: Norah Pancoast
- Student Body Treasurer: Campbell Johnson
- Senior Senator: Summer Mandrell
- Senior Senator: Sage Parks
- Junior Senator: Chioma Anumba
- Junior Senator: Aurora Martins Rocha
- Junior Representative: Molly Adams
- Junior Representative: Ella Grace
- Junior Representative: Lyla Grossman
- Junior Representative: Harlow Knowles
- Sophomore Senator: Jada Adderly
- Sophomore Senator: Zi'Yair Harvey
- Sophomore Representative: Emily (Ngan) Le
- Sophomore Representative: Isabella McHargue
- Sophomore Representative: Claire Sorgius
- Sophomore Representative: Logan Sprague
- Freshman Senator: Riley Fabulich
- Freshman Senator: Giovanna Rimblas
- Freshman Representative: Sophie Jasper
- Freshman Representative: Avery Sassner
- Advisor: Megan Koppitch



Blue Wave

Secondary Family Welcome

PKY PTO

Leadership



Blue Wave

Secondary Family Welcome

PKY PTO

Leadership

PTO Meeting

Thursday, September 11, 5:30-6:30 pm
1st floor green wing, secondary building

**Looking for grade level parent reps
specifically in secondary!**

Stay Connected: Facebook Group PKY PTO

SCAN to fill out PTO Interest Form





Blue Wave

Secondary Family Welcome



School Community Info

<https://pkyonge.ufl.edu/my-pk/>