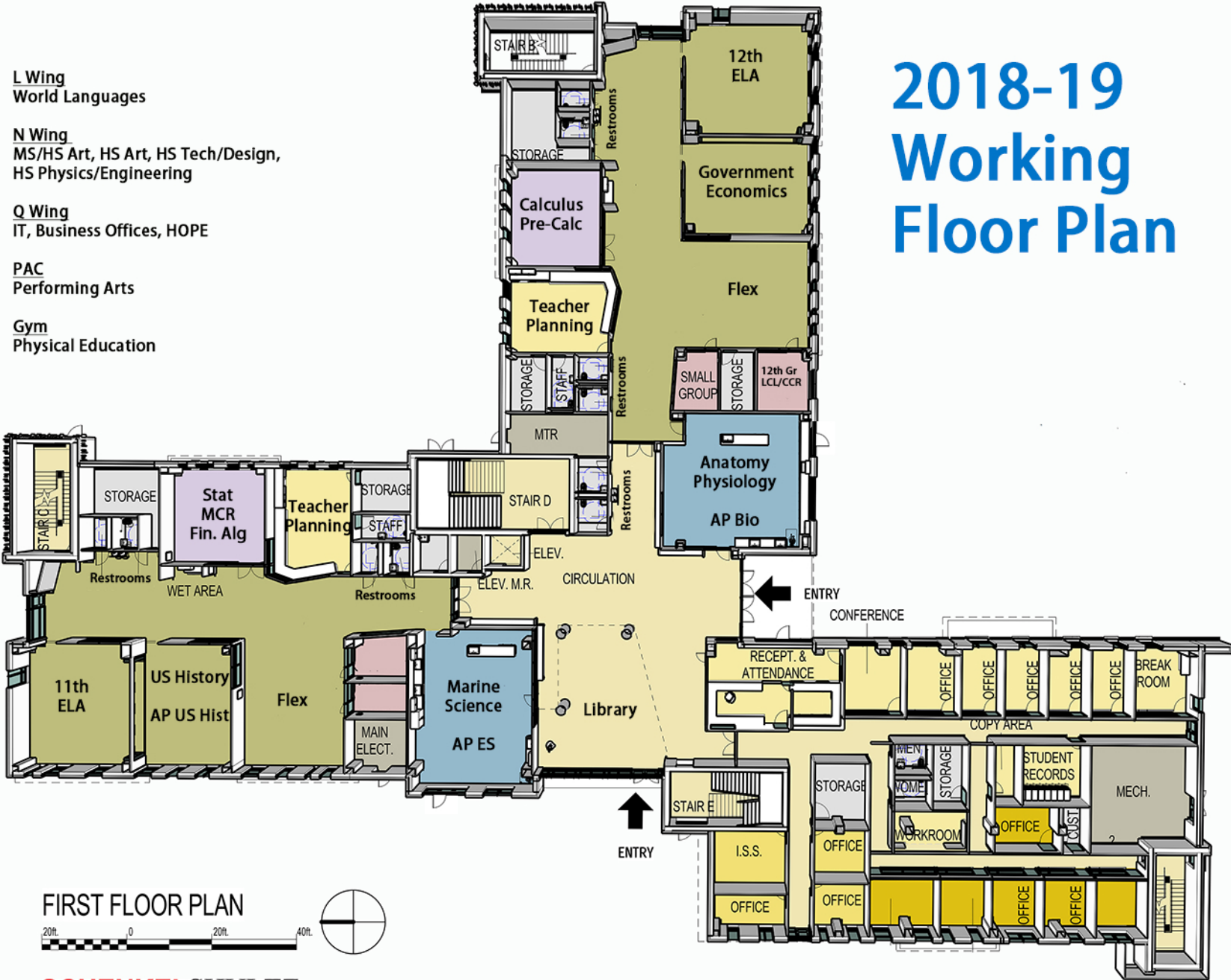
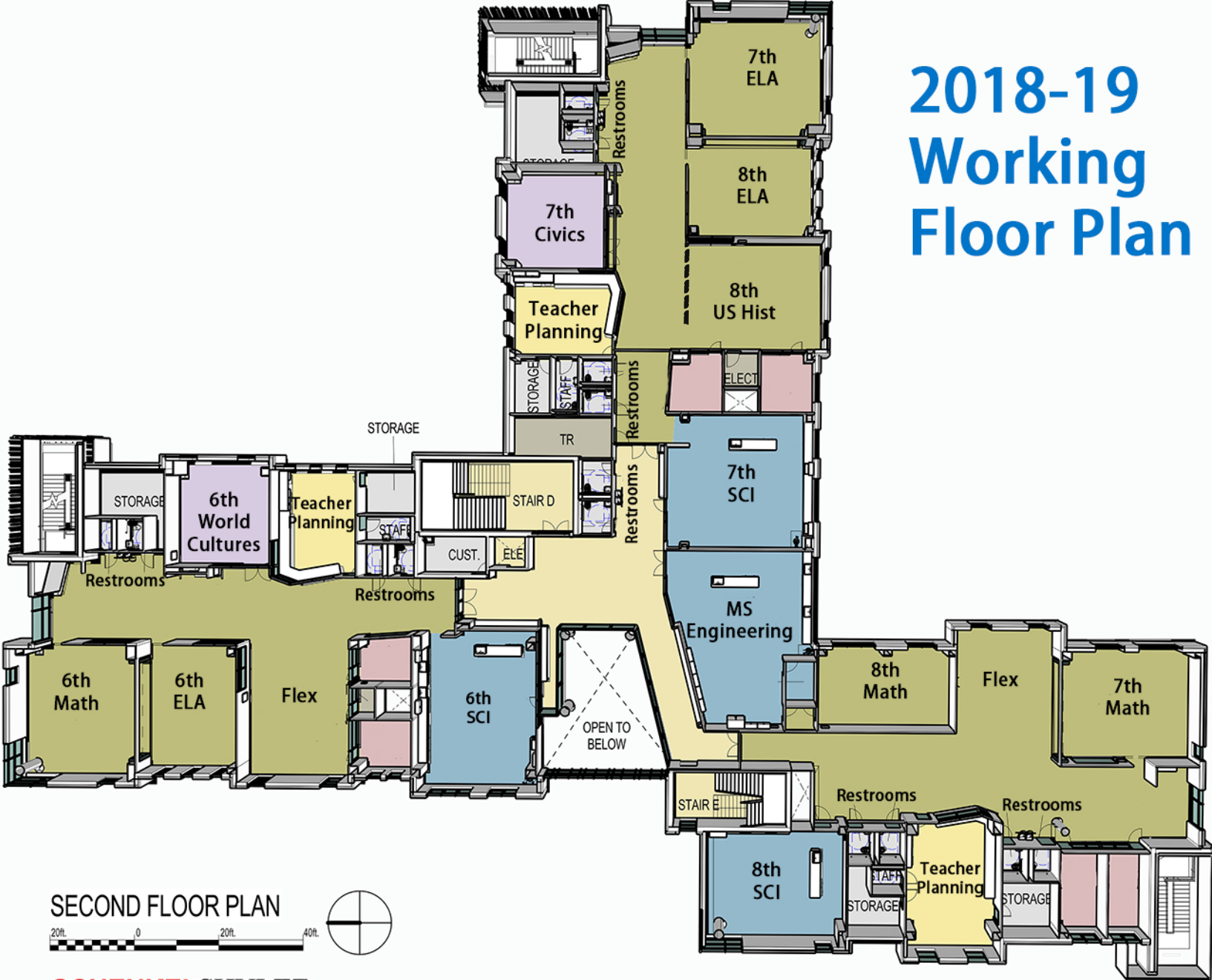


2018-19 Working Floor Plan

- L Wing**
World Languages
- N Wing**
MS/HS Art, HS Art, HS Tech/Design,
HS Physics/Engineering
- Q Wing**
IT, Business Offices, HOPE
- PAC**
Performing Arts
- Gym**
Physical Education



2018-19 Working Floor Plan



SECOND FLOOR PLAN



2018-19 Working Floor Plan



THIRD FLOOR PLAN

