

# OPTION 3

**L Wing**  
World Languages

**N Wing**  
MS/HS Art, HS Art, HS Tech/Design,  
HS Physics/Engineering

**Q Wing**  
IT, Business Offices, HOPE

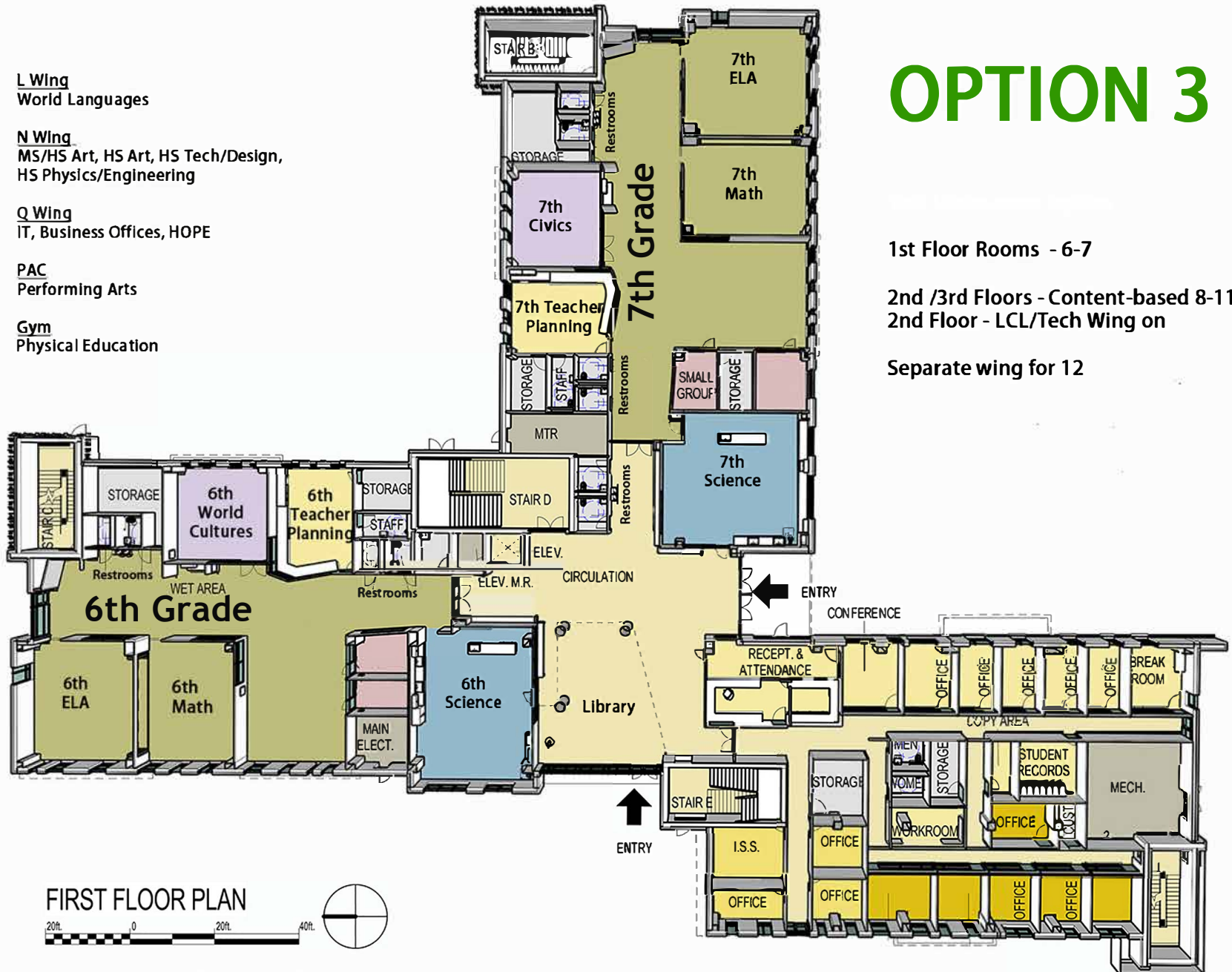
**PAC**  
Performing Arts

**Gym**  
Physical Education

1st Floor Rooms - 6-7

2nd /3rd Floors - Content-based 8-11  
2nd Floor - LCL/Tech Wing on

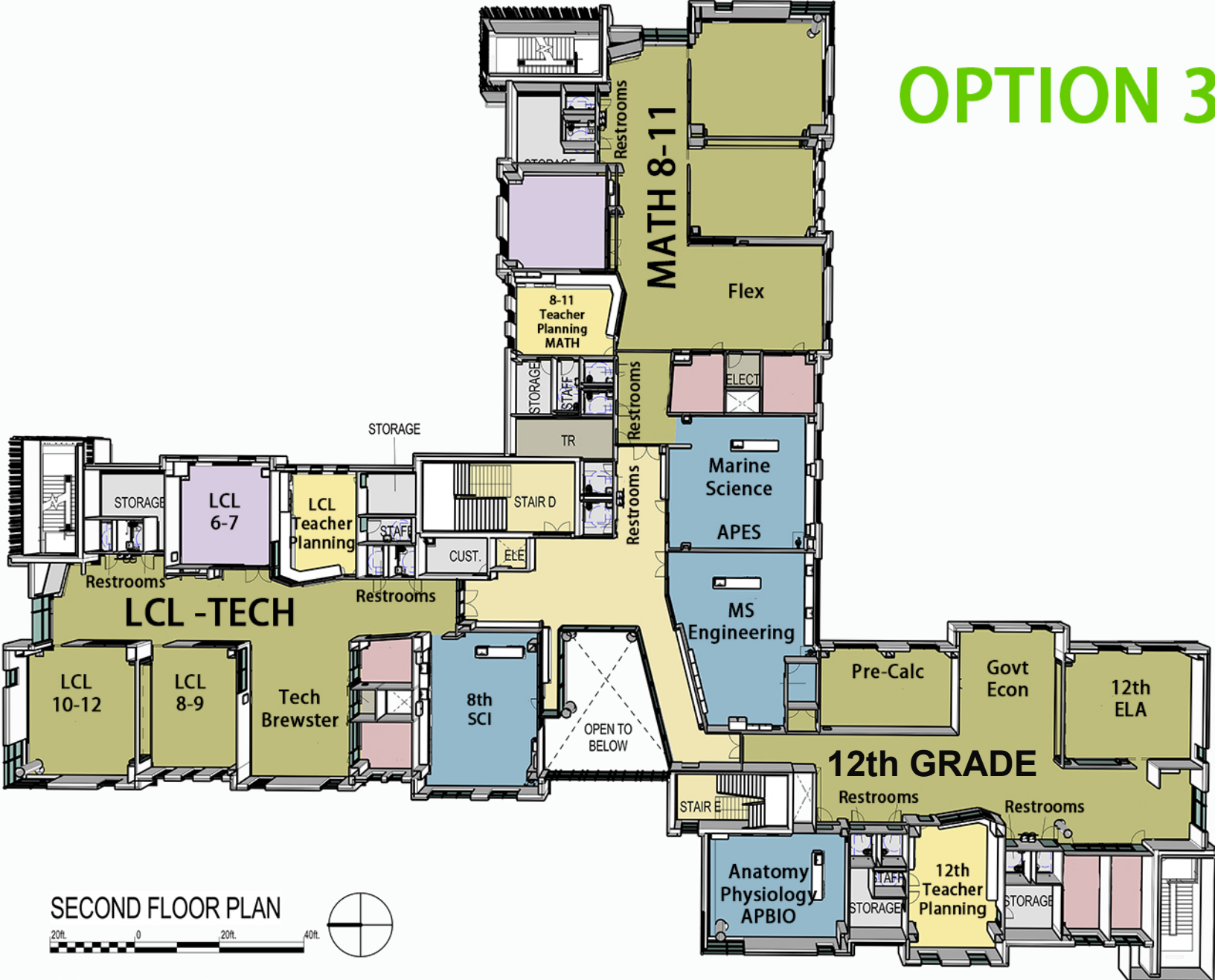
Separate wing for 12



FIRST FLOOR PLAN



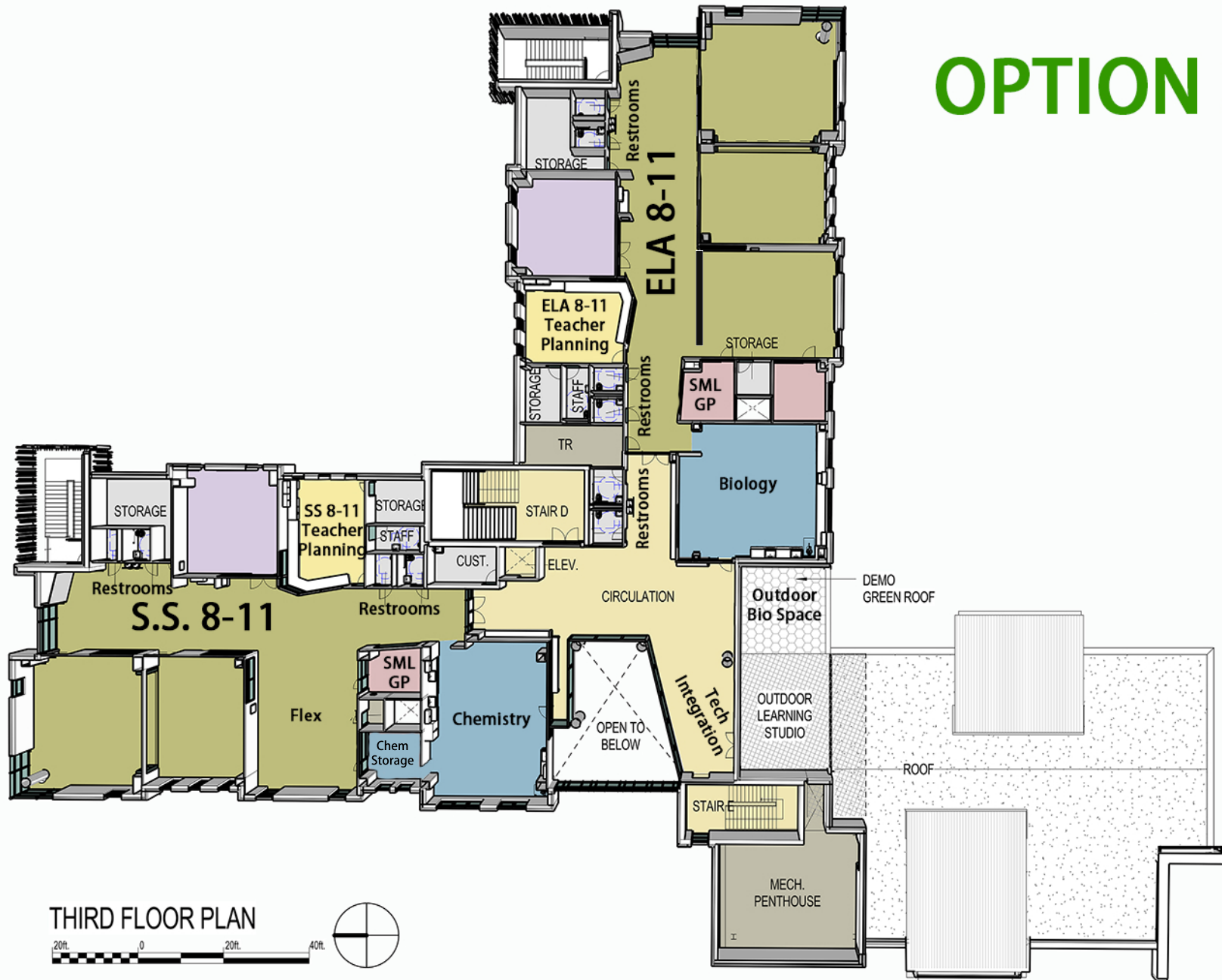
# OPTION 3



SECOND FLOOR PLAN



# OPTION 3



THIRD FLOOR PLAN

